

**South African
Institute for
Aquatic Biodiversity**

**A Facility of the National
Research Foundation**



SAIAB



**National
Research
Foundation**

DEPARTMENT OF ICHTHYOLOGY

Rhodes University, Grahamstown

ICHTHYOLOGICAL BULLETIN No. 22

ISSUED SEPTEMBER, 1961

FISHES OF THE FAMILY
APOGONIDAE

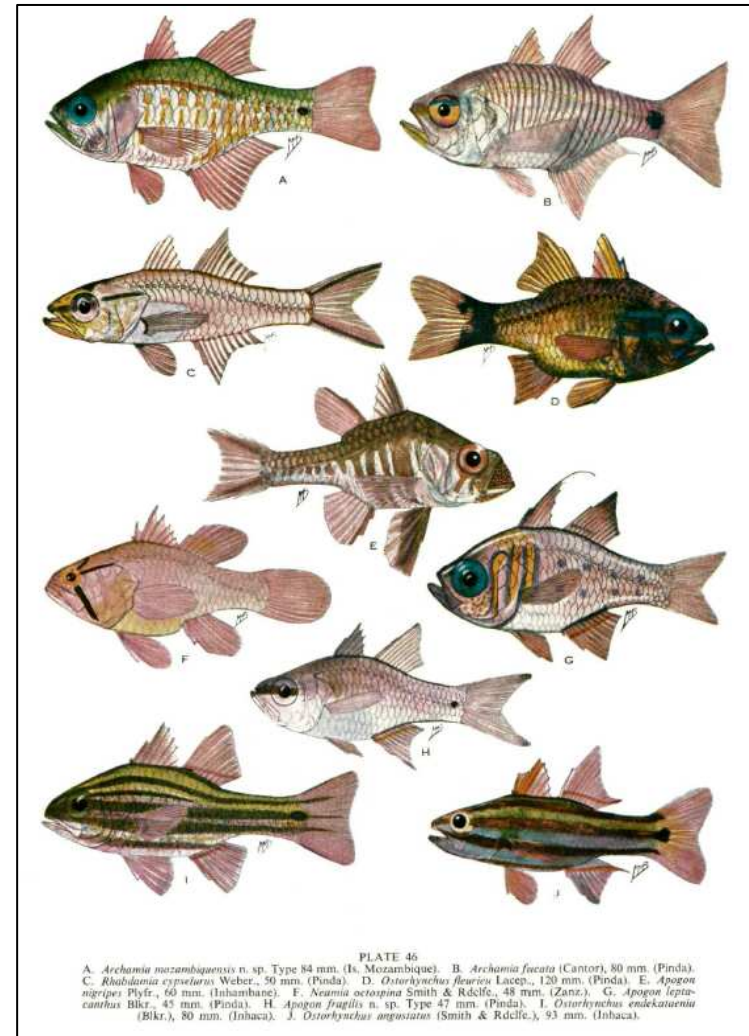
of the Western Indian Ocean and the Red Sea

by

J. L. B. SMITH

Research Professor and South African Council for Scientific and Industrial Research
Fellow in Ichthyology

Illustrations by Margaret M. Smith



Displaying 49 to 64 of 119 matches

[Click an image for details and enlargement](#)

< Previous 16 Next 16 > New Search



Barbus lornae



Barbus lornae



Barbus lornae



Barbus lornae



Barbus eutaenia



Barbus eutaenia



Barbus eutaenia



Barbus eutaenia



Pseudobarbus phlegethon



Pseudobarbus phlegethon



Pseudobarbus phlegethon



Pseudobarbus cf. asper



Barbus radiatus



Barbus radiatus



Barbus fasciolatus



Barbus fasciolatus

Displaying 30 to 45 of 231 matches

[Click an image for details and enlargement](#)

< Previous 16 Next 16 > New Search



Chetia brevis



Astatotilapia calliptera



Astatotilapia sp.



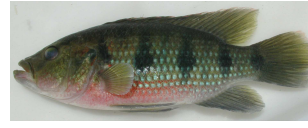
Neolamprologus mustax



Tilapia rendalli



Hemichromis sp.



Hemichromis sp.



Hemichromis biocellatus



Pelvicachromis taeniatus



Pseudocrenilabrus philander



Pseudocrenilabrus philander



Pseudocrenilabrus philander



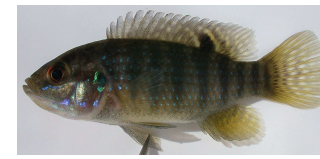
Serranochromis angusticeps



Serranochromis altus



Sargochromis greenwoodi



Tilapia ruweti

Lutjanus sp.



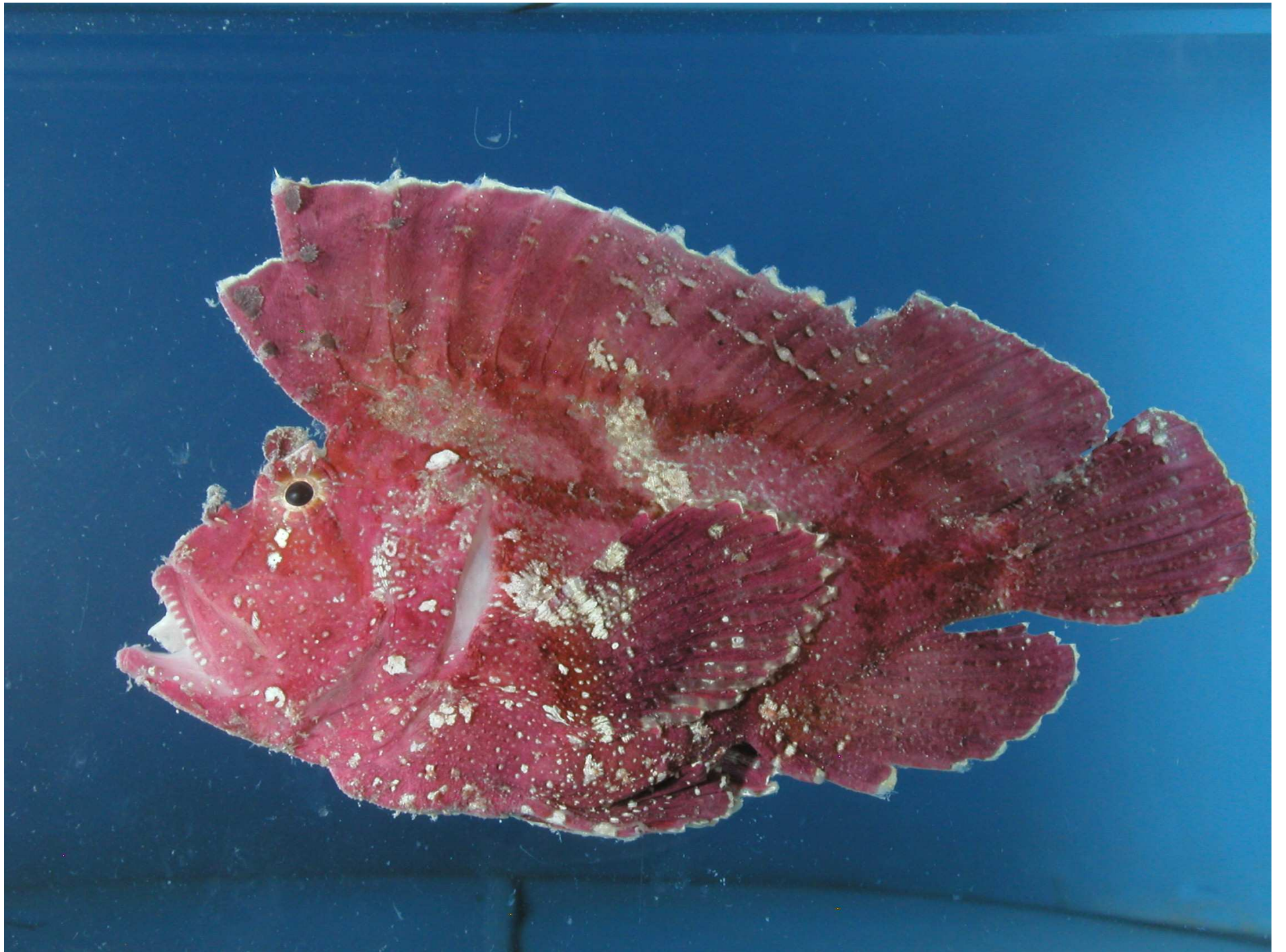
Valid Name	<i>Lutjanus</i> sp.		
Synonym	-		
Common Name	-	Country	South Africa
Photographer / Artist	Dennis King	Area	Sodwana bay
Catalogue	Visual	River System	-
Catalogue Number	77739	Branch of System	-
Conservation Status	-	River	-
Type Satus	-	Waterbody	-
CD Number	-	Latitude	-
File Name	7655.jpg	Longitude	-
Size of Specimen	-	Date	21/10/2006
Family	Lutjanidae		
Full Locality Description	South Africa: KwaZulu-Natal: Sodwana Bay: 2-mile Reef		

Petrocephalus wesselsi



Valid Name	<i>Petrocephalus wesselsi</i>		
Synonym	-		
Common Name	southern churchill	Country	South Africa
Photographer / Artist	Roger Bills	Area	Waterberg
Catalogue	Specimen	River System	Mokolo
Catalogue Number	78596	Branch of System	-
Conservation Status	Least Concern	River	Mokolo
Type Satus	-	Waterbody	-
CD Number	-	Latitude	-23.970833
File Name	7655.jpg	Longitude	27.7255555
Size of Specimen	45.8 mm SL	Date	17/09/2006
Family	Mormyridae		
Full Locality Description	South Africa: Limpopo: Waterberg: Mokolo River: at weir below Mokolo Dam		













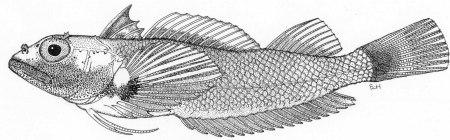
Displaying 1 to 9 of 9 matches

[Click an image for details and enlargement](#)

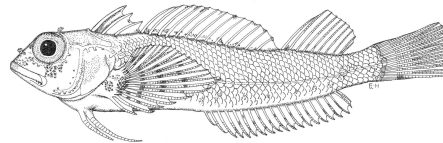
< Previous 16

Next 16 >

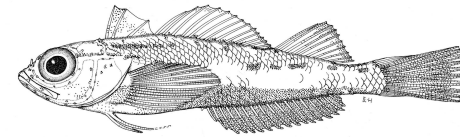
New Search



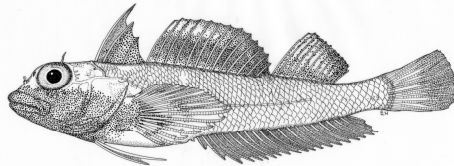
Helcogramma ellioti



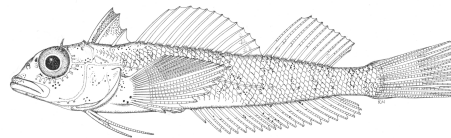
Helcogramma ellioti



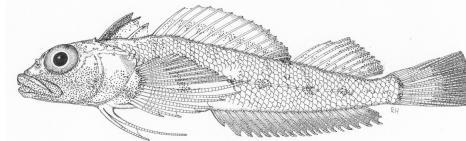
Helcogramma maldivensis



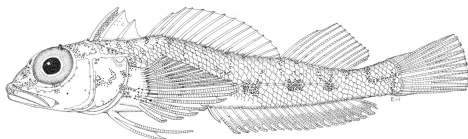
Helcogramma microstigma



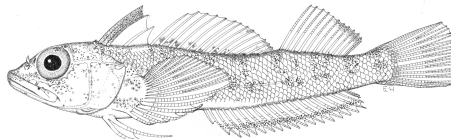
Helcogramma microstigma



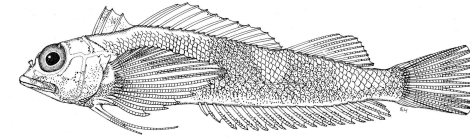
Helcogramma rosea



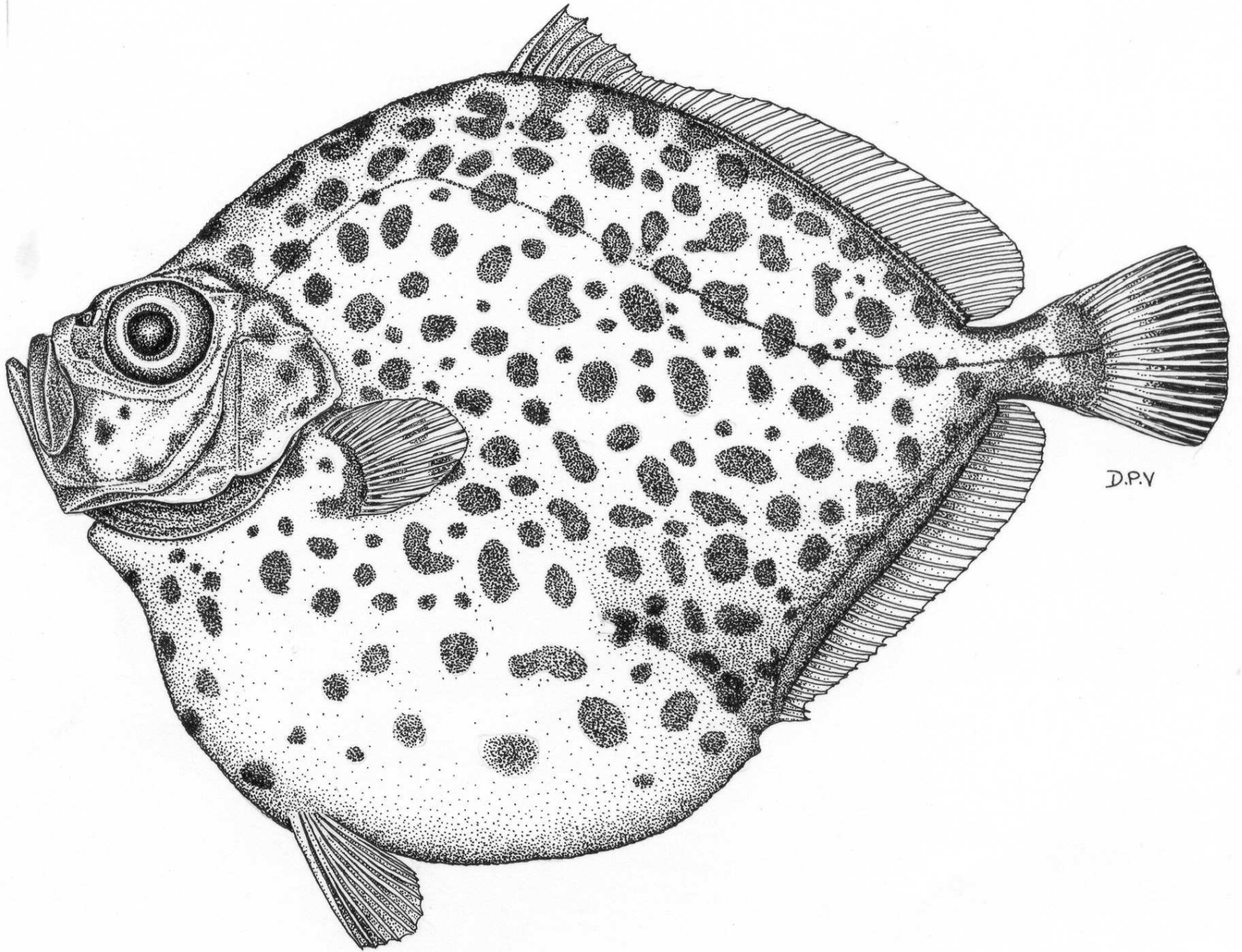
Helcogramma rosea



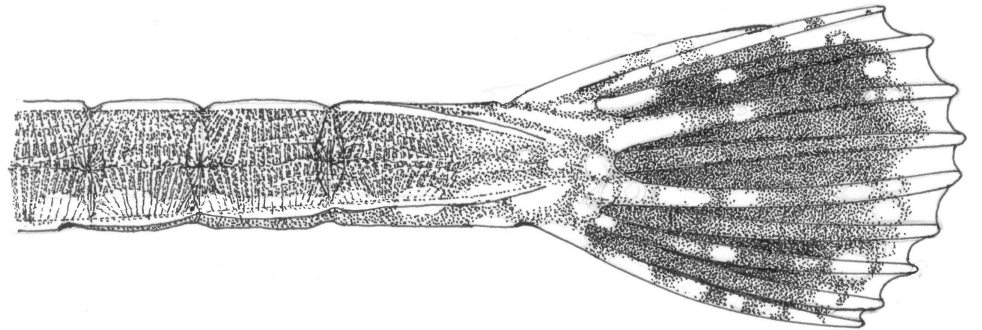
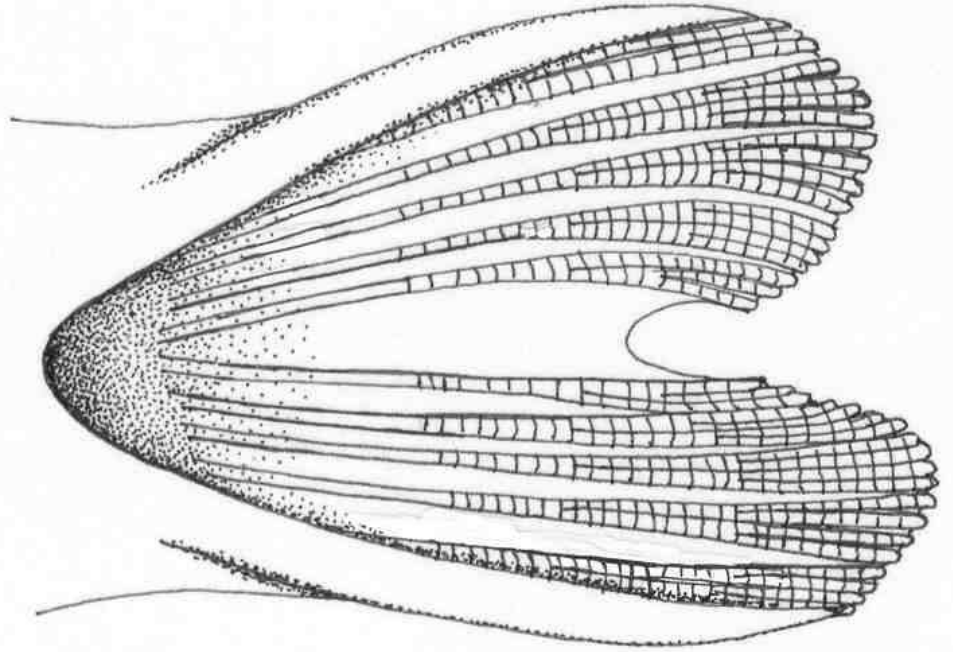
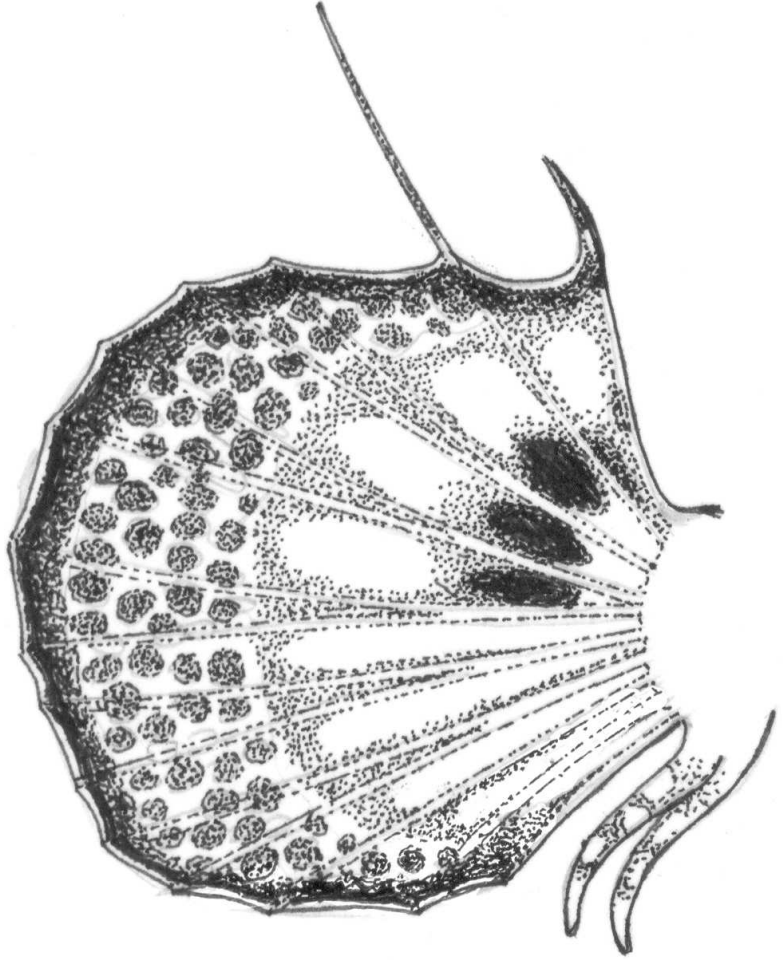
Helcogramma steinitzi

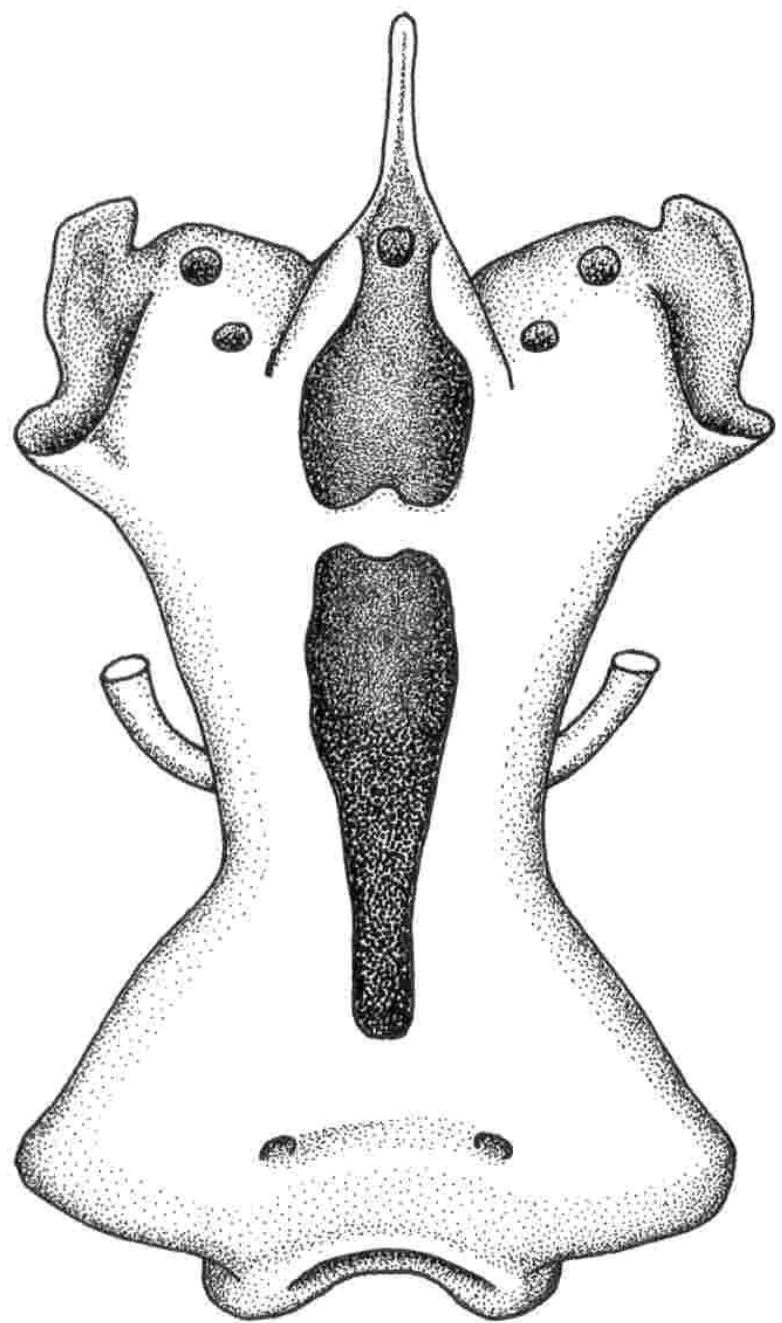
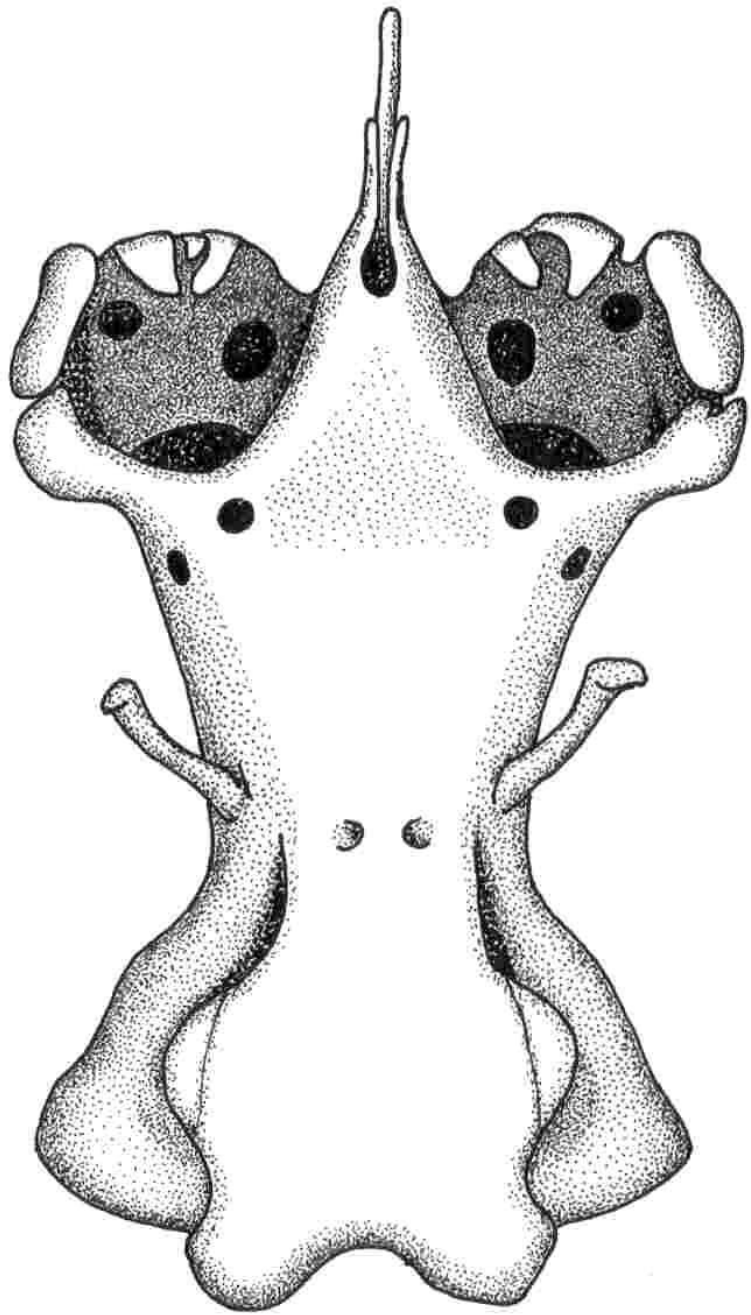


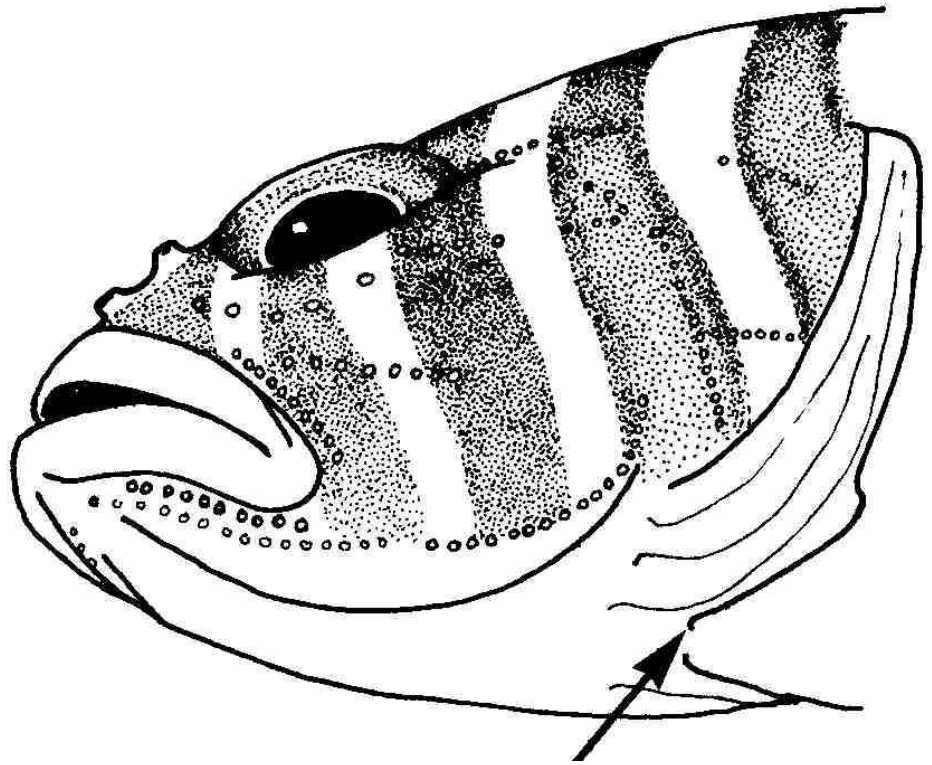
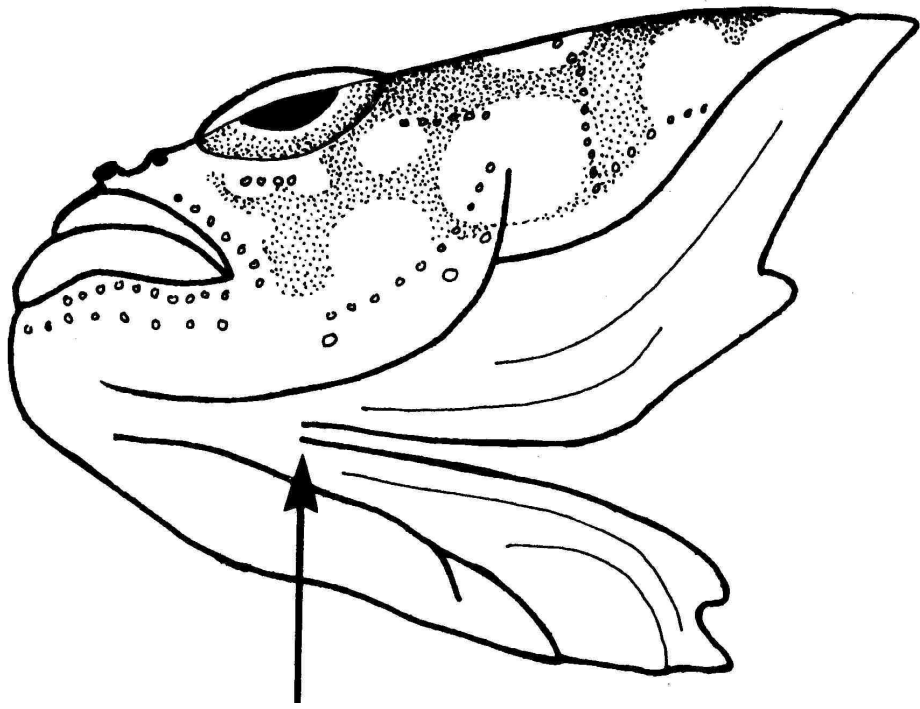
Helcogramma sp.

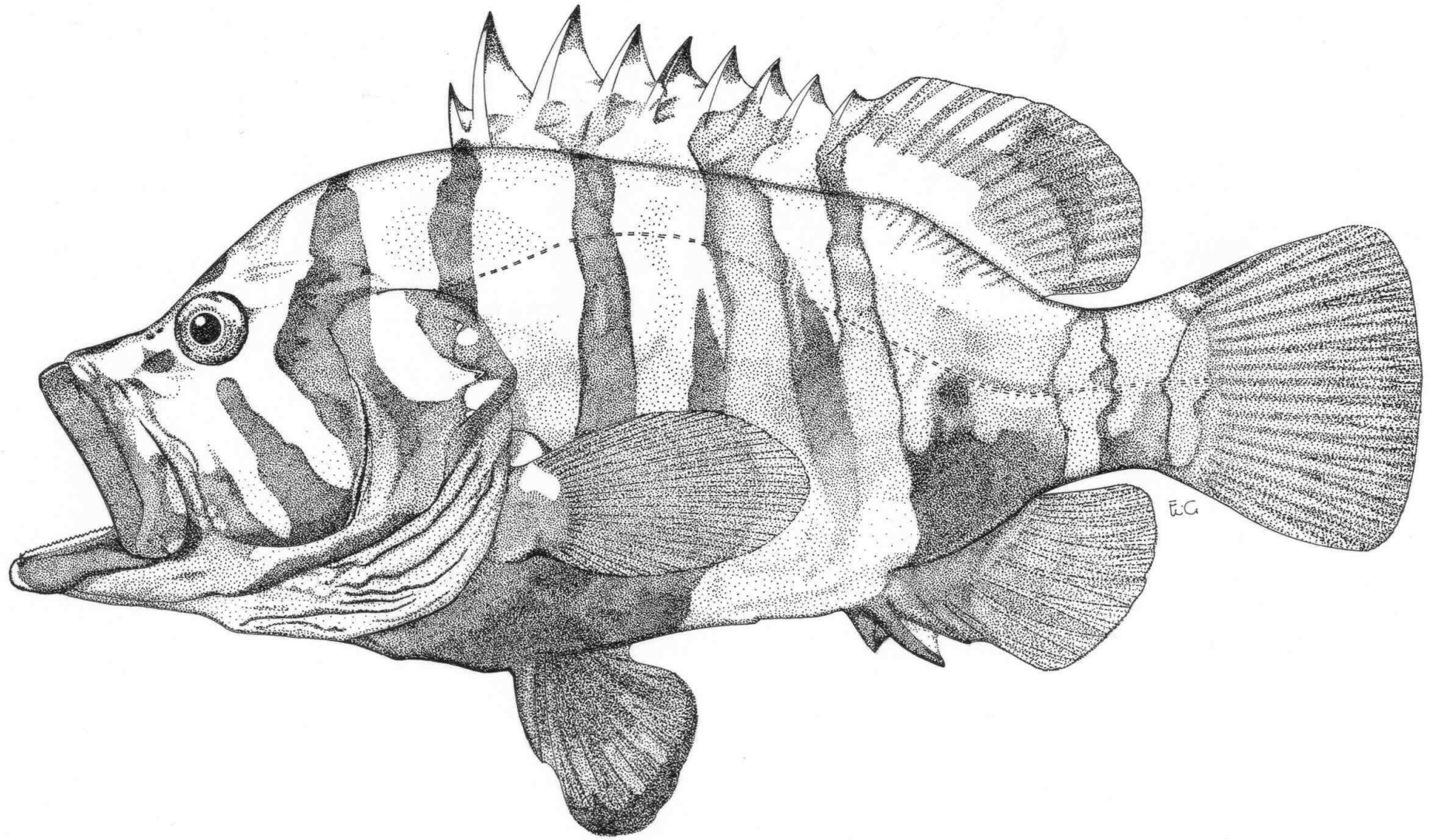


D.P.V.



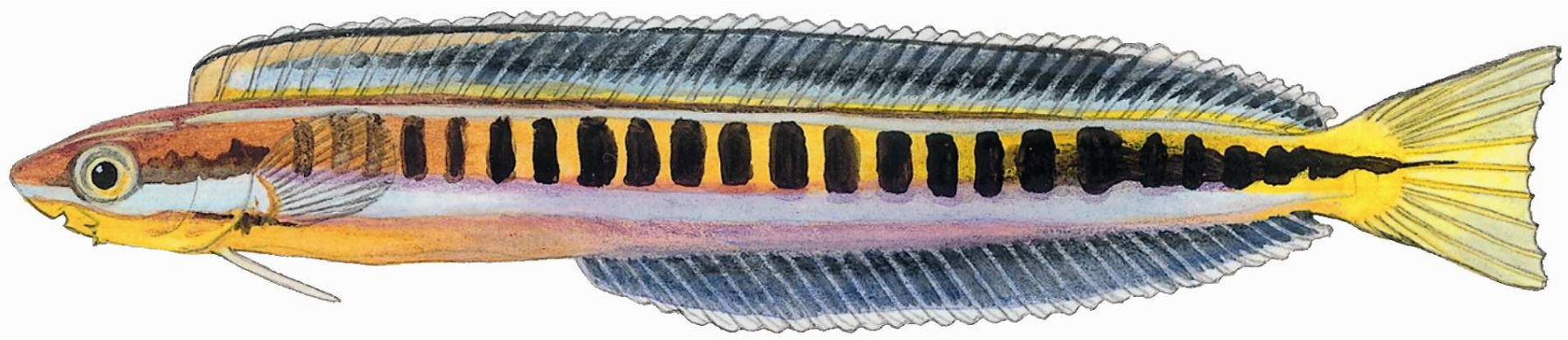
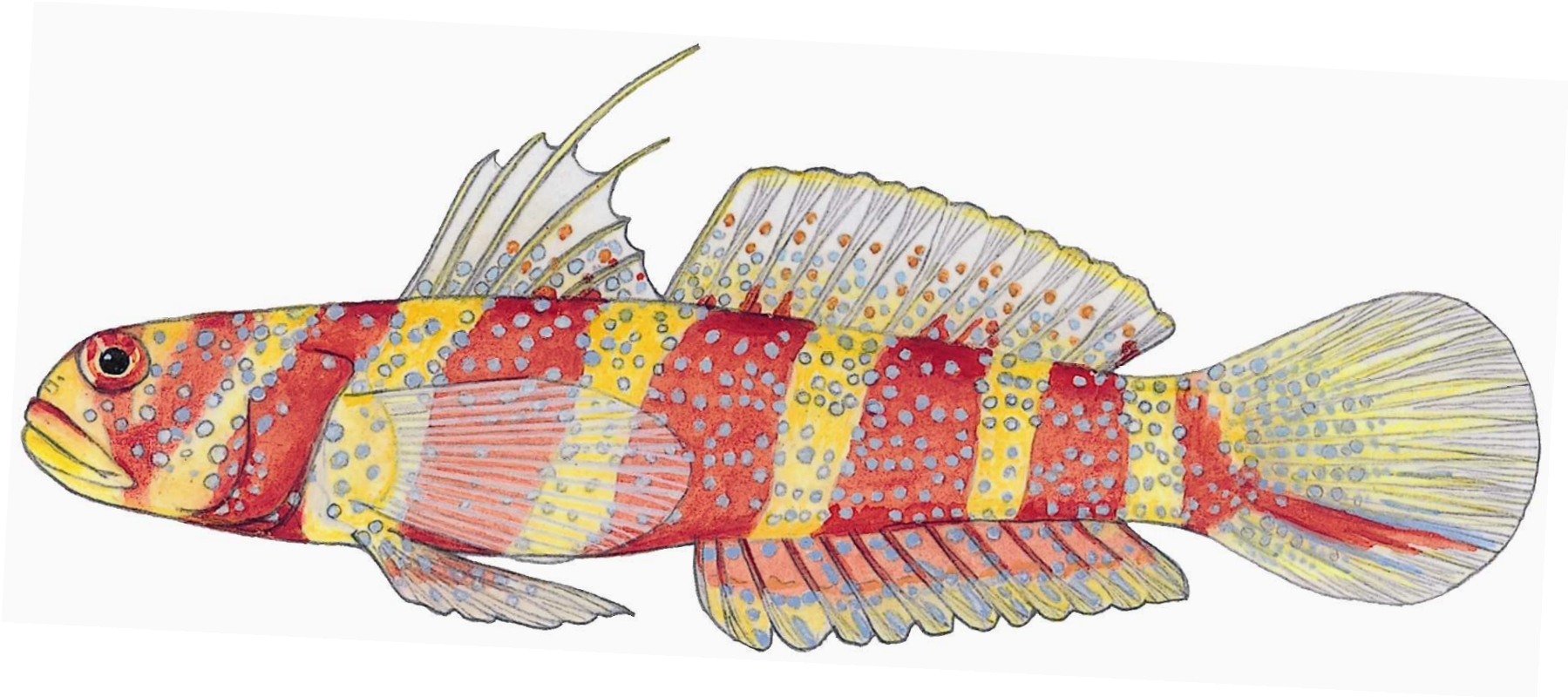


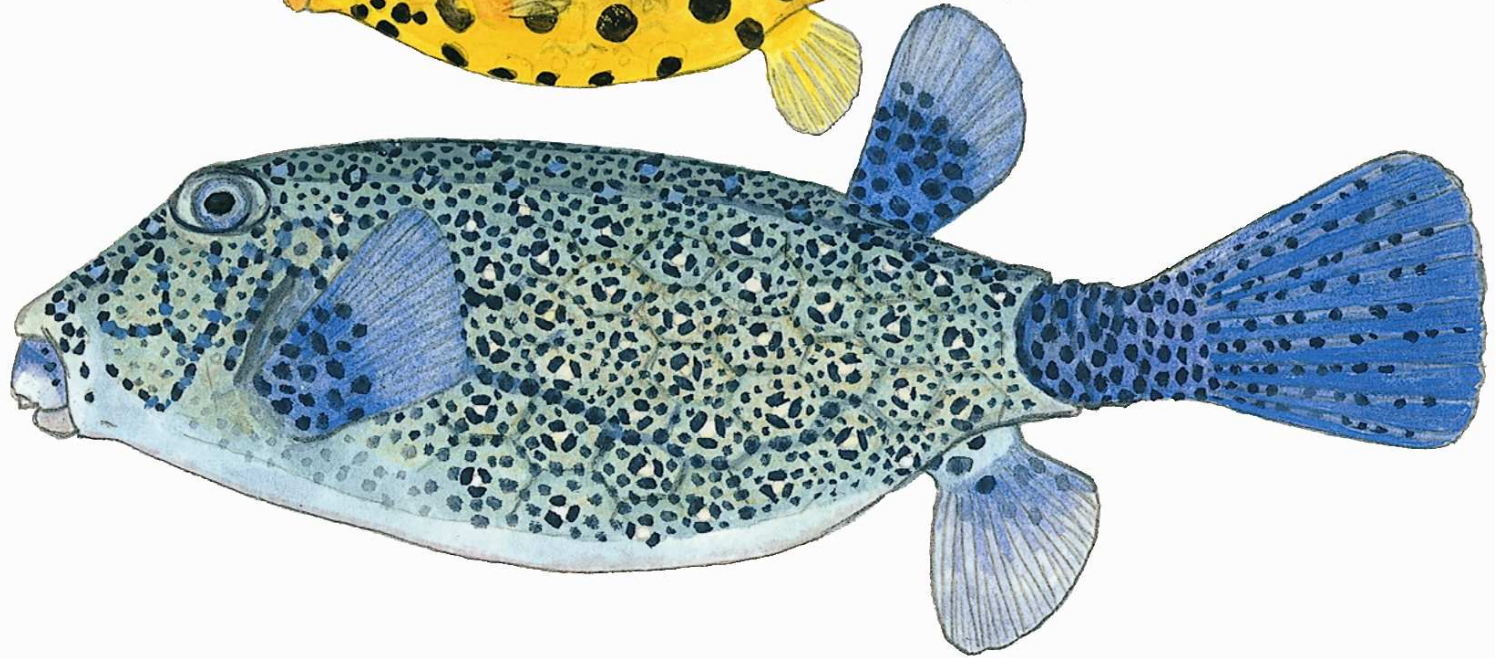
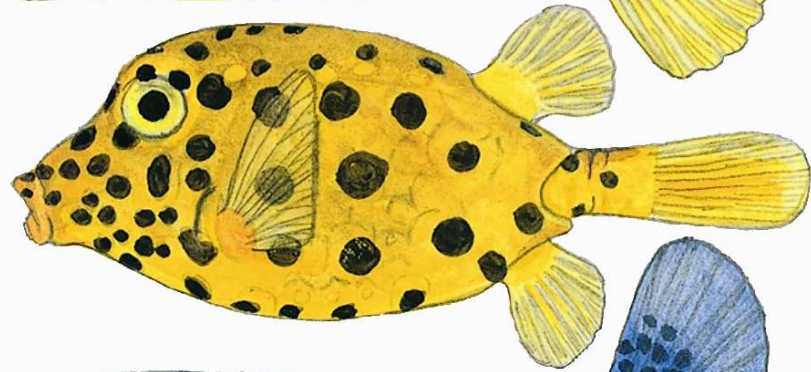
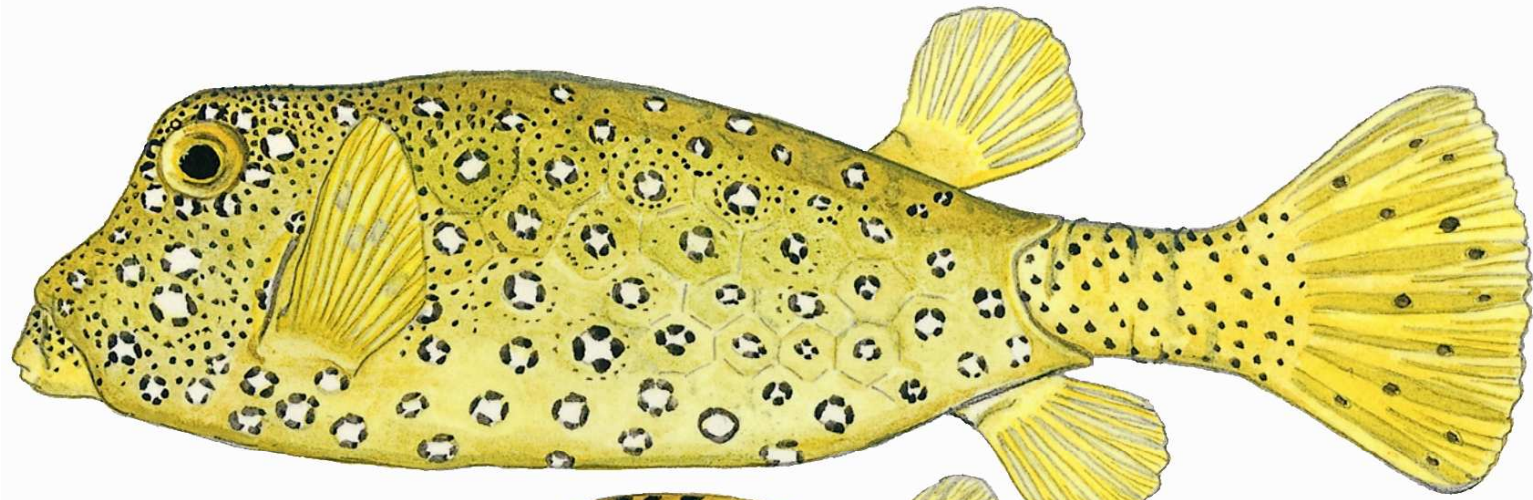












Search

All Words Any Words

No matches

- [-] Specify
 - [+] Enter New Data
 - [+] Search & Edit Data
 - [+] Enter New Transactions
 - [+] Search & Edit Transactions
 - [-] Open an Existing Search
 - [+] Taxon Tree
 - [-] Print
 - [+] Perform Admin Functions
 - [+] Links
 - [-] Display Help
 - [-] Exit Specify

- [-] Statistics
 - Specimens cataloged: 86904
 - Taxa represented: 7583
 - Type specimens: 1852
 - Countries represented: 186
 - Percent georeferenced: 82.27
 - Open loans: 205
 - Specimens on loan: 1565
 - Cataloged this week: 0
 - Cataloged this month: 0
 - Cataloged this year: 659



SAIAB Information Portal



- Biodiversity Informatics
- Library Resources
- Links
- Contact

Biodiversity Informatics

These are some of the linked, in-house biodiversity information tools that SAIAB scientists use in the course of their exploration- and collection-based research in fish taxonomy, systematics, genetics and biodiversity conservation.

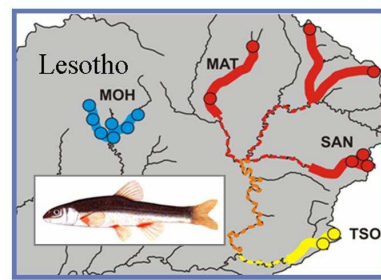


Image Collection

This collection of over 10 000 fish photographs, drawings and paintings continues to grow apace. Specimen details, in 26 fields extracted from the collection database of the National Fish Collection, are displayed below the specimen images.



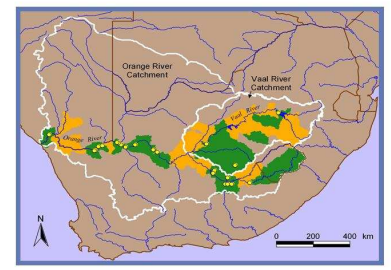
Fish Collection Database

Query the collection database of the National Fish Collection via the Specify Web Interface. Over 80 000 specimen-lots of fishes from southern Africa and surrounding oceans, and from elsewhere in the world, have been catalogued.



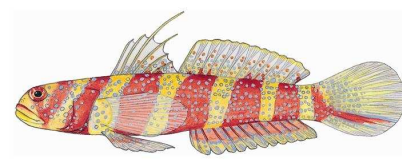
Online GIS

The 2006 IUCN / SAIAB conservation assessments of southern African freshwater fishes will be published in June 2007. View the latest freshwater fish distribution information, much of which originated in the collection database of the National Fish Collection.



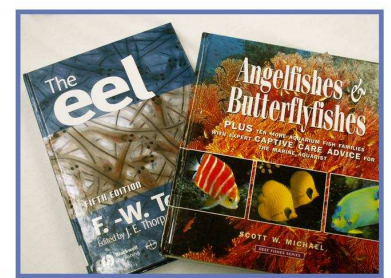
Online Taxonomic Keys

Need to identify a goby? Try these Lucid keys to the five goby subfamilies and 91 goby genera in the Western Indian Ocean. Many of the goby species and their characteristics are illustrated by links to the SAIAB image collection.



Library Resources

As a Rhodes University Branch Library, the Margaret Smith Library's holdings are fully integrated into the University's Online Public Access Catalogue. The rare and antiquarian texts are listed separately.



Information Portal queries: The Webmaster
Last Updated: 23 March 2007

**South African
Institute for
Aquatic Biodiversity**

**A Facility of the National
Research Foundation**



SAIAB



**National
Research
Foundation**