



Scientific Electronic Library Online

BHL SciELO Network: quarterly report

Reporting period: January 1, 2012 - March 31, 2012

Technical Support: *Fabiana Montanari*, SciELO Supervisor, FapUNIFESP; *Fabio Batalha*, SciELO Supervisor, FapUNIFESP; *José Eugênio Grillo*, Consultant; *Luis Gomes*, SciELO Administrator, FapUNIFESP

Project Coordinators: *Abel L. Packer*, SciELO Operational Coordinator, Advisor on Information and Communication in Science, Foundation of the Federal University of São Paulo; *Hussam Zaher*, Director, Museum of Zoology, University of São Paulo

São Paulo - May 2012

Content

1	Introduction	3
2	Content Statistics	3
3	New software and functional development	7
3.1	Project Applications	9
4	Website Statistics	10
5	Social Media Statistics	10
6	Anecdotes and Testimonials.....	10
7	About BHL SciELO Network	Erro! Indicador não definido.
8	Annex.....	11

1 Introduction

This report describes the implementation and operation of BHL SciELO Network has as a goal to enrich, extend and give strength and development of the national infrastructure of information and scientific knowledge on biodiversity to support research and education in the area, as well as public policies, programs, projects and processes decision-making related to biodiversity conservation and sustainable use of the environment.

Among the results achieved in the last three months, include: a) started the operation of another Center Scanner, with infrastructure installed in the Instituto Butantana and training of local staff to operate the scanner; b) scanning of the 11.938 pages in the Centers Scanners installed in the Museu de Zoologia; and c) ThesBio: thesaurus of biodiversity available and consists of 2.898 terms.

2 About BHL SciELO Network

The BHL SciELO Network has as a goal to enrich, extend and give strength to the publication and access to online relevant biodiversity scientific information.

The BHL SciELO Network operations are divided into three tiers:

- 1- The network of institutions and individuals that take part and contribute as producers, intermediaries and users of the biodiversity scientific information;
- 2- The network of content organized as information sources that include the products, services and events provided and maintained by the institutions and individuals in it;
- 3- The network learning and informed environments that is based on the exchange of ideas, experiences and knowledge that strengthen the contextualization of information and knowledge in biodiversity.

The BHL SciELO Network is part of the SciELO Network and the Biodiversity Heritage Livrary

BHL SciELO Network: quarterly report

(BHL) and is associated with the Virtual Health Library (VHL) that is managed by BIREME/PAHO/WHO, and uses its methodology in management and operation of the network.

The network was built on two complementary projects:

- 1- The digitization and publication of a collection of essential works in biodiversity of the Brazilian libraries project and;
- 2- SciELO Biodiversity Project.

Both projects have the support and financial aport of the Environment Ministry (by means of the Probio II/GEF), the Fundação de Amparo à Pesquisa do Estado de São Paulo - FAPESP (by means of the SciELO project with participation of the FAPESP Virtual Library, BIOTA/FAPESP program), National Library Foundation, BIREME/PAHO/WHO, USP Zoology Museum and Brazilian Biodiversity Library network representatives.

3 Content Statistics

From the BHL SciELO Network Portal (<http://www.bhlsciELO.org>), available of information sources result in the following:

- a) BHL Brazil, with 376 works about the Brazilian fauna and flora, digitized in the context of the BHL;
- b) Global BHL, with 105.186 works about the biodiversity in the various regions of the world, already available in the BHL;
- c) Biodiversity journals, with 40 journals of the biodiversity that are already part of SciELO Network (Annex);
- d) SciELO Articles in Biodiversity, with 833 articles published in journals in the SciELO Network;

BHL SciELO Network: quarterly report

- e) Repository BIOTA / FAPESP, with 547 articles produced in the context of the BIOTA/FAPESP Program;
- f) ThesBio: thesaurus of biodiversity presenting the following composition:

Category	Terms	Scope Note	Bibliographic Note
Biossegurança & Biotecnologia	53	29	7
Ciências Agrárias	34	18	1
Ciências Ambientais	344	266	35
Ciências da Saúde	7	7	0
Denominações Geográficas	0	1	0
Disciplinas	47	22	0
Fenômenos e Processos	359	212	2
Organismos	1692	332	0
Políticas e Gestão	362	123	58
Total	2898	1010	103

- g) Other sources: Blogs (105 records), Events (30 records), Biodiversity Law (with 70 national laws) and Biodiversity Online Collaborative Space.

The Figure shows the home page of BHL SciELO Network Portal:



Figura 1 - Página principal do Portal da Rede BHL SciELO

For the digitization of essential works in biodiversity of Brazilian libraries, the BHL SciELO Network, through the support and financial aport of the Environment Ministry (by means of the Probio II/GEF), will deploy a storage structure consisting of a local infrastructure for the assembly of five Centers Scanners and an infrastructure for Storage Center, which will be allocated on the SciELO, ensuring the persistence and publication of data scanned continuously for a period of two years.

The table below shows the digitized works by two scanning center, installed in Museu de Zoologia USP in January 2012:

Unidade de Informação	Periódico	volume(s)	# de volumes	# páginas digitalizadas
MZUSP	Publicações do Conselho Nacional de Proteção aos Índios	1	1	133
MZUSP	Revista de Ciencias	4, 6	2	231
MZUSP	Revista do Museu Paulista	14 a 23	10	10910
MZUSP	Publicações Avulsas do Depto de Zoologia	1 a 8	8	664
TOTAL			21	11938

From January to March, installed infrastructure of the digitization in the Instituto Butantan and the operation will start in April.

4 New software and functional development

For the operation of activities related to digitization of works essential biodiversity, teams SciELO and BHL, after completion of the “Workshop Essential Collection Rare Works in Biodiversity: governance, operation and digitization”, the establishment of infrastructure composed of Storage, Tape Library, LTO, storage units (NAS) External Hard Drives and Desktops.

The technology architecture provides the implementation of a storage structure consisting of a local infrastructure for the Centers Scanners and a central infrastructure to ensure the existence and publication of data scanned continuously for a period of two years.

This architecture aims to empower the Centers scanners in the scanning process and also ensure the safe storage of digitized content, while it is in the process of evaluation and production centers within the scanners, as well as a guarantee from all of Central Storage resources necessary for security and availability of digitized works.

The Figure shows the technology architecture of BHL SciELO Network:

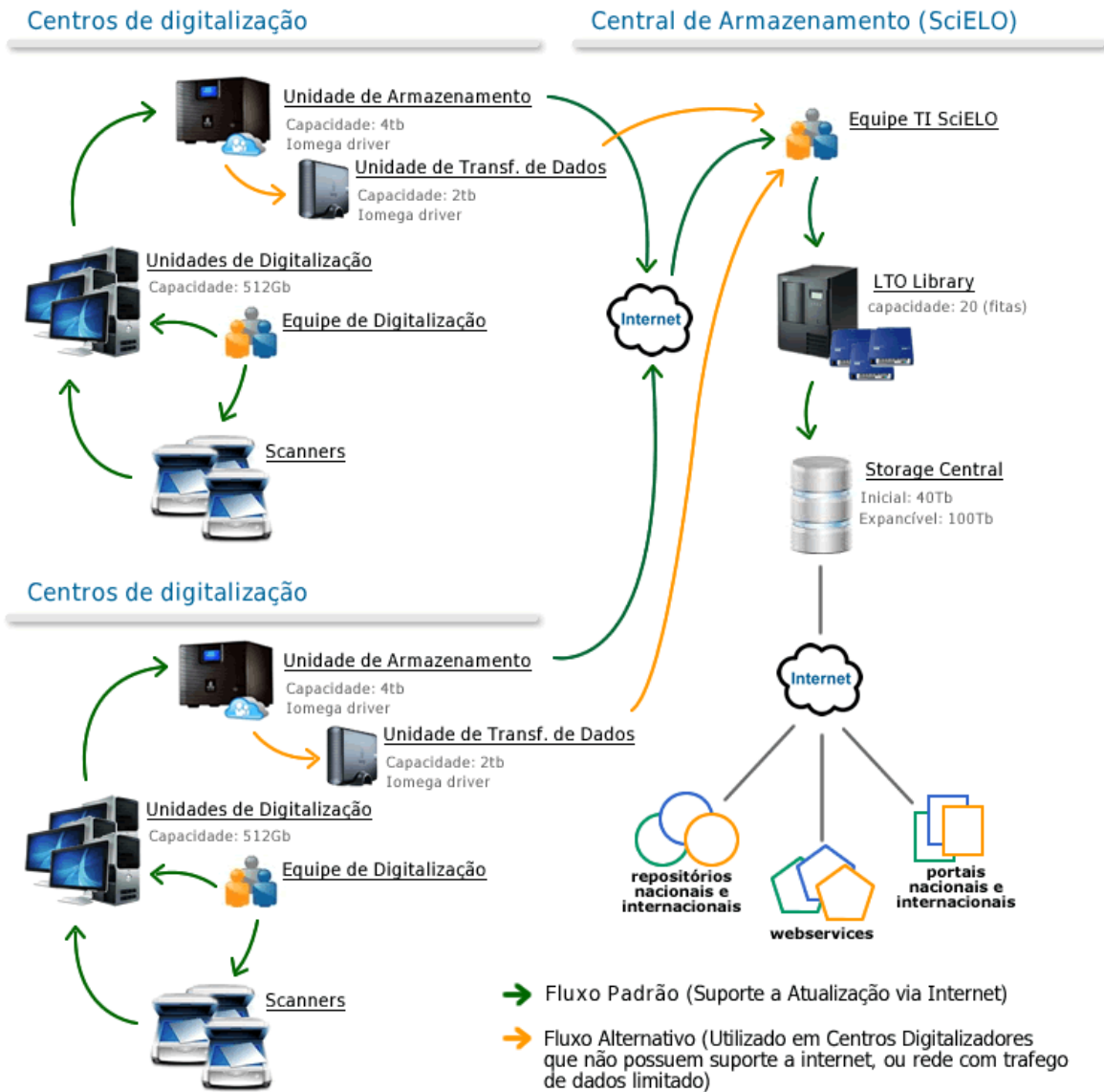


Imagem 1: Arquitetura Tecnológica

4.1 Project Applications

The Image 2 shows the set of applications that are now part of the Project:

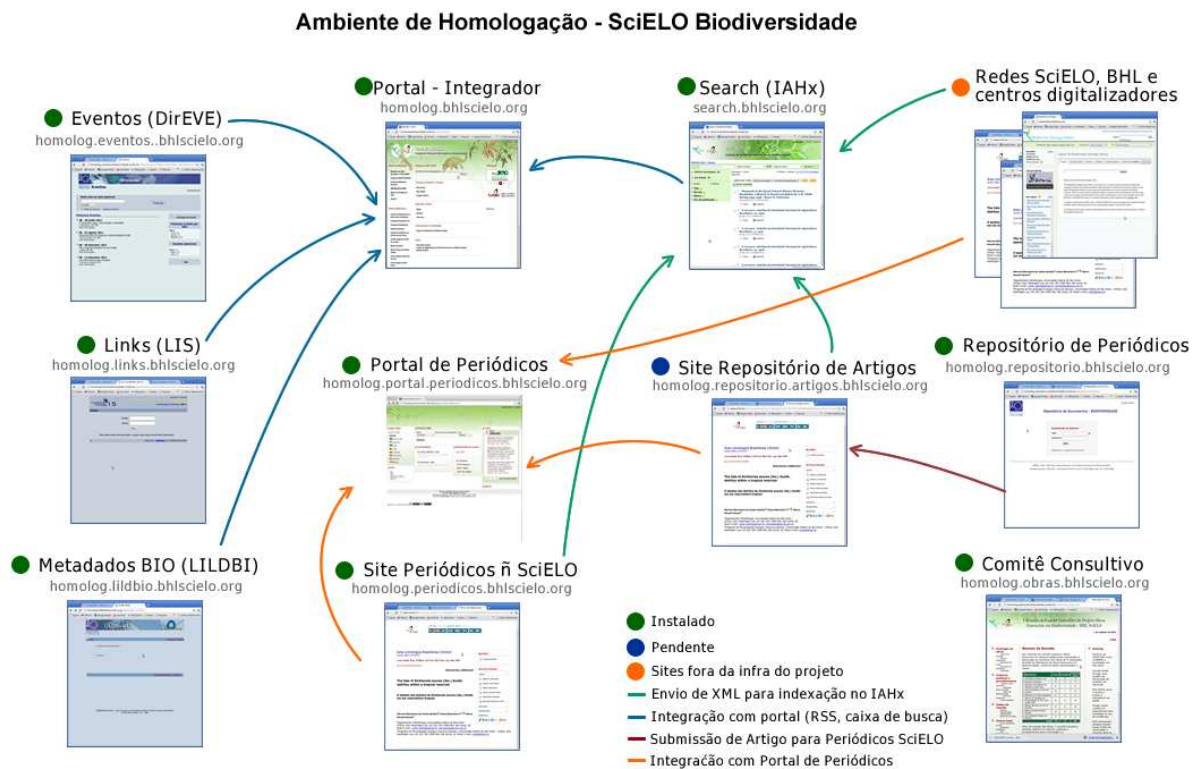


Imagem 2: Aplicações do Projeto

This suite are present a tool for recording events (DIREVE), tool to record links (LIS), a tool for the bibliographic record of digitized works (LILDBI) , integrated research tool content (iAHx), a portal integrator that provides information content of the various sources of project information (BVS-Site), a portal to SciELO journals in biodiversity (BVS, SciELO Site), a repository system articles in biodiversity (Repository SciELO), SciELO a site for articles submitted to the repository (Web SciELO), a site not SciELO SciELO journals (SciELO Web), a system for managing Thesaurus biodiversity (TemaTres) and a site support for committee meetings.

5 Website Statistics

The BHL SciELO Network uses Google Analytics to measure the access to the content available on the site. Considering the tool has only been included to the BHL SciELO Network site, not very long ago, the data on access will be presented in the next report.

6 Social Media Statistics

From January to March, were released from the Twitter Network SciELO 7 Tweets related to BHL SciELO Network. In the Online Collaborative Space, were 43 registered users, representatives of groups who worked on the project development.

7 Anecdotes and Testimonials

No anecdotes or testimonials available at this point.

Annex

Biodiversity journals

#	Title	ISSN	URL	Collection
1	Acta Amazonica	0044-5967	http://www.scielo.br/scielo.php?script=sci_serial&pid=0044-5967&lng=pt&nrm=iso	Brasil
2	Acta Botanica Brasilica	0102-3306	http://www.scielo.br/scielo.php?script=sci_serial&pid=0102-3306&lng=pt&nrm=iso	Brasil
3	Acta Botánica Mexicana	0187-7151	http://www.scielo.org.mx/scielo.php?script=sci_serial&pid=0187-7151&lng=es&nrm=iso	México
4	Acta Limnológica Brasiliensia (Online)	2179-975X	http://www.scielo.br/scielo.php?script=sci_serial&pid=2179-975X&lng=pt&nrm=iso	Brasil
5	Acta Zoológica Mexicana	0065-1737	http://www.scielo.org.mx/scielo.php?script=sci_serial&pid=0065-1737&lng=es&nrm=iso	México
6	Anais da Sociedade Entomológica do Brasil	0301-8059	http://www.scielo.br/scielo.php?script=sci_serial&pid=0301-8059&lng=pt&nrm=iso	Brasil
7	Biota Neotropica	1676-0603	http://www.scielo.br/scielo.php?script=sci_serial&pid=1676-0603&lng=pt&nrm=iso	Brasil
8	Boletín Científico. Centro de Museos. Museo de Historia Natural	0123-3068	http://www.scielo.org.co/scielo.php?script=sci_serial&pid=0123-3068&lng=en&nrm=iso	Colômbia
9	Boletín de Investigaciones Marinas y Costeras - INVEMAR	0122-9761	http://www.scielo.org.co/scielo.php?script=sci_serial&pid=0122-9761&lng=en&nrm=iso	Colômbia
10	Boletín de la Sociedad Argentina de Botánica	1851-2372	http://www.scielo.org.ar/scielo.php?script=sci_serial&pid=1851-2372&lng=es&nrm=iso	Argentina
11	Boletín de la Sociedad Botánica de México	0366-2128	http://www.scielo.org.mx/scielo.php?script=sci_serial&pid=0366-2128&lng=es&nrm=iso	México
12	Brazilian Journal of Botany	1806-9959	http://www.scielo.br/scielo.php?script=sci_serial&pid=1806-9959&lng=en&nrm=iso	Brasil
13	Brazilian Journal of Oceanography	1679-8759	http://www.scielo.br/scielo.php?script=sci_serial&pid=1679-8759&lng=pt&nrm=iso	Brasil
14	Caldasia	0366-5232	http://www.scielo.org.co/scielo.php?script=sci_serial&pid=0366-5232&lng=en&nrm=iso	Colômbia
15	Darwiniana: revista del Instituto de Botánica Darwinion	0011-6793	http://www.scielo.org.ar/scielo.php?script=sci_serial&pid=0011-6793&lng=es&nrm=iso	Argentina
16	Ecología Austral	1667-782X	http://www.scielo.org.ar/scielo.php?script=sci_serial&pid=1667-782X&lng=es&nrm=iso	Argentina
17	El Hornero: revista de ornitología neotropical	0073-3407	http://www.scielo.org.ar/scielo.php?script=sci_serial&pid=0073-3407&lng=es&nrm=iso	Argentina

BHL SciELO Network: quarterly report

#	Title	ISSN	URL	Collection
18	Gayana (Concepción): international journal of biodiversity, oceanology and conservation	0717-6538	http://www.scielo.cl/scielo.php?script=sci_serial&pid=0717-6538&lng=pt&nrm=iso	Chile
19	Gayana. Botánica	0717-6643	http://www.scielo.cl/scielo.php?script=sci_serial&pid=0717-6643&lng=pt&nrm=iso	Chile
20	Hoehnea	2236-8906	http://www.scielo.br/scielo.php?script=sci_serial&pid=2236-8906&lng=pt&nrm=iso	Brasil
21	Iheringia. Série Zoologia	0073-4721	http://www.scielo.br/scielo.php?script=sci_serial&pid=0073-4721&lng=pt&nrm=iso	Brasil
22	Kurtziana	1852-5962	http://www.scielo.org.ar/scielo.php?script=sci_serial&pid=1852-5962&lng=es&nrm=iso	Argentina
23	Latin American Journal of Aquatic Research	0718-560X	http://www.scielo.cl/scielo.php?script=sci_serial&pid=0718-560X&lng=pt&nrm=iso	Chile
24	Mastozoología Neotropical	0327-9383	http://www.scielo.org.ar/scielo.php?script=sci_serial&pid=0327-9383&lng=es&nrm=iso	Argentina
25	Neotropical Entomology	1519-566X	http://www.scielo.br/scielo.php?script=sci_serial&pid=1519-566X&lng=pt&nrm=iso	Brasil
26	Neotropical Ichthyology	1679-6225	http://www.scielo.br/scielo.php?script=sci_serial&pid=1679-6225&lng=pt&nrm=iso	Brasil
27	Papéis Avulsos de Zoologia (São Paulo)	0031-1049	http://www.scielo.br/scielo.php?script=sci_serial&pid=0031-1049&lng=pt&nrm=iso	Brasil
28	Phyton (Buenos Aires): revista internacional de botánica experimental	1851-5657	http://www.scielo.org.ar/scielo.php?script=sci_serial&pid=1851-5657&lng=es&nrm=iso	Argentina
29	Polibotánica	1405-2768	http://www.scielo.org.mx/scielo.php?script=sci_serial&pid=1405-2768&lng=es&nrm=iso	México
30	Revista Brasileira de Botânica	0100-8404	http://www.scielo.br/scielo.php?script=sci_serial&pid=0100-8404&lng=pt&nrm=iso	Brasil
31	Revista Brasileira de Entomologia	0085-5626	http://www.scielo.br/scielo.php?script=sci_serial&pid=0085-5626&lng=pt&nrm=iso	Brasil
32	Revista Brasileira de Zoologia	0101-8175	http://www.scielo.br/scielo.php?script=sci_serial&pid=0101-8175&lng=pt&nrm=iso	Brasil
33	Revista chilena de historia natural	0716-078X	http://www.scielo.cl/scielo.php?script=sci_serial&pid=0716-078X&lng=pt&nrm=iso	Chile
34	Revista Colombiana de Entomología	0120-0488	http://www.scielo.org.co/scielo.php?script=sci_serial&pid=0120-0488&lng=en&nrm=iso	Colômbia
35	Revista de Biología Marina y Oceanografía	0718-1957	http://www.scielo.cl/scielo.php?script=sci_serial&pid=0718-1957&lng=pt&nrm=iso	Chile
36	Revista de la Sociedad Entomológica Argentina	0373-5680	http://www.scielo.org.ar/scielo.php?script=sci_serial&pid=0373-5680&lng=es&nrm=iso	Argentina
37	Revista del Museo Argentino de Ciencias Naturales	1853-0400	http://www.scielo.org.ar/scielo.php?script=sci_serial&pid=1853-0400&lng=es&nrm=iso	Argentina

BHL SciELO Network: quarterly report

#	Title	ISSN	URL	Collection
38	Revista Internacional de Contaminación Ambiental	0188-4999	http://www.scielo.org.mx/scielo.php?script=sci_serial&pid=0188-4999&lng=es&nrm=iso	México
39	Revista Mexicana de Biodiversidad	1870-3453	http://www.scielo.org.mx/scielo.php?script=sci_serial&pid=1870-3453&lng=es&nrm=iso	México
40	Zoologia (Curitiba, Impresso)	1984-4670	http://www.scielo.br/scielo.php?script=sci_serial&pid=1984-4670&lng=pt&nrm=iso	Brasil