

# The Biodiversity Heritage Library

Since we last met in November 2011...



# BHL



**3<sup>rd</sup> Global BHL Meeting**  
**7 June 02012 | Museum für Naturkunde | Berlin, Germany**  
**Martin R. Kalfatovic | Smithsonian Libraries**

# Ch-ch-cha-changes

69. a.



b.



71. a.



# New BHL Governance

## Executive Committee

- Chair, Vice-Chair, Secretary
- Project Director, Deputy Project Director
- Technical Director

## Steering Committee

- Contribute funds to the Secretariat
- 9 institutional members

## Institutional Council

- Interested institutions who sign participation agreement

# 15. Library of Congress

Agreement to join, but not yet signed



**New &  
Improved**

16. ??????

17. ??????

18. ??????

19. ??????

20. ??????

n+1. ??????

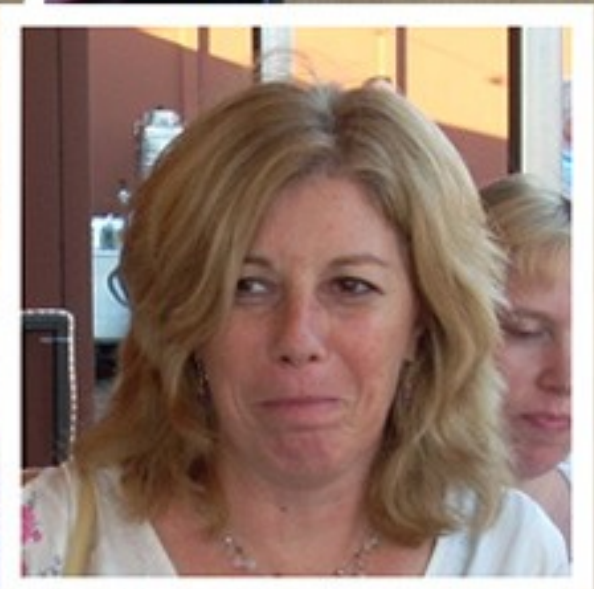


**BHL Executive Committee, 2007-2011**  
**Cathy Norton | Graham Higley | Connie Rinaldo**





**BHL Executive Committee, 2011-  
Nancy Gwinn | Connie Rinaldo | Susan Fraser**





BHL Founding Director  
Tom Garnett retires, March 2012







BHL Director, Martin Kalfatovic  
BHL Program Manager, Grace Costantino





HARVARD UNIVERSITY

Museum of Comparative Zoology



MCZ staffer JJ  
Ford has  
moved  
to Smithsonian  
Libraries



Smithsonian Libraries





Some Good News



FELIS HIMALYANUS ?

(Himalayan Serval.)





# BioDivLibrary's photostream pro

Collections Sets Galleries Tags People Archives Favorites Profile BioDivLib... is a contact (edit)



n839\_w1150

an hui jing ji zhi wu zhi 安徽经济植物志 an hui ke xue ji shu chu ban she 安徽科学技术出版社 biodiversitylibrary .org/item/112354

Some rights reserved

Uploaded on Nov 9, 2011

0 comments



n838\_w1150

an hui jing ji zhi wu zhi 安徽经济植物志 an hui ke xue ji shu chu ban she 安徽科学技术出版社 biodiversitylibrary .org/item/112354

Some rights reserved

Uploaded on Nov 9, 2011

0 comments

> 390,000 views in 10 months

> 30,000+ images





## **FUNDING SOURCES**

**\$260,000 NEH Grant**  
**\$200,000 Federal Appropriation**  
**\$90,000 Membership Dues**  
**\$3,900 gifts**



# BHL Africa

\$45,000: JRS Foundation

In June 2012, again with the support of the JRS Foundation, the first BHL African Organizational meeting will be held in Cape Town in conjunction with the SANBI BIMF 2012 meeting.

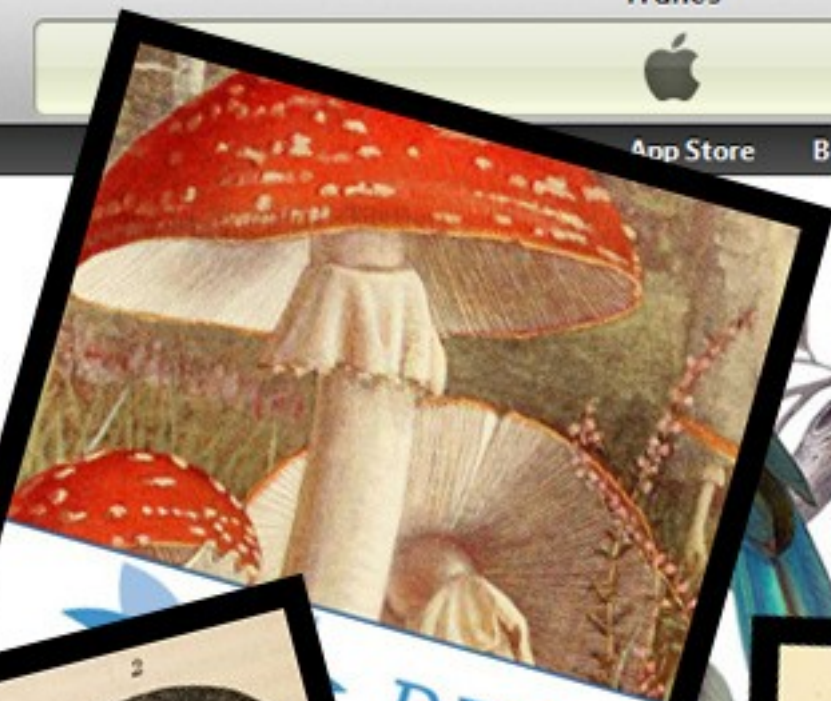
Over 25 participants from sub-Saharan Africa will join BHL members to discuss the parameters of a BHL Africa.



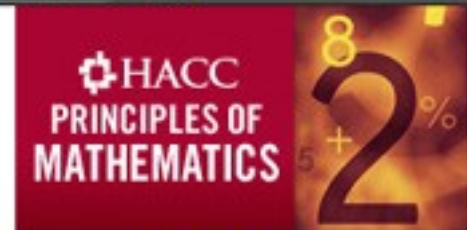




Biodiversity



BHL  
Heritage Library



BHL  
Biodiversity Heritage Library



BHL  
Biodiversity Heritage Library

The Sun  
star  
The Open

STANFORD

Introduction to  
Linear Dynamics

Core Concepts in  
Chemistry

iPad and iPhone  
App Development

Mastering Tech-  
Artistry

Future energy  
The Open University

Introduction to  
China

Rights, Remixes,  
and Respect

The new  
entrepreneur



Understanding  
Business



Astro  
From  
Yale

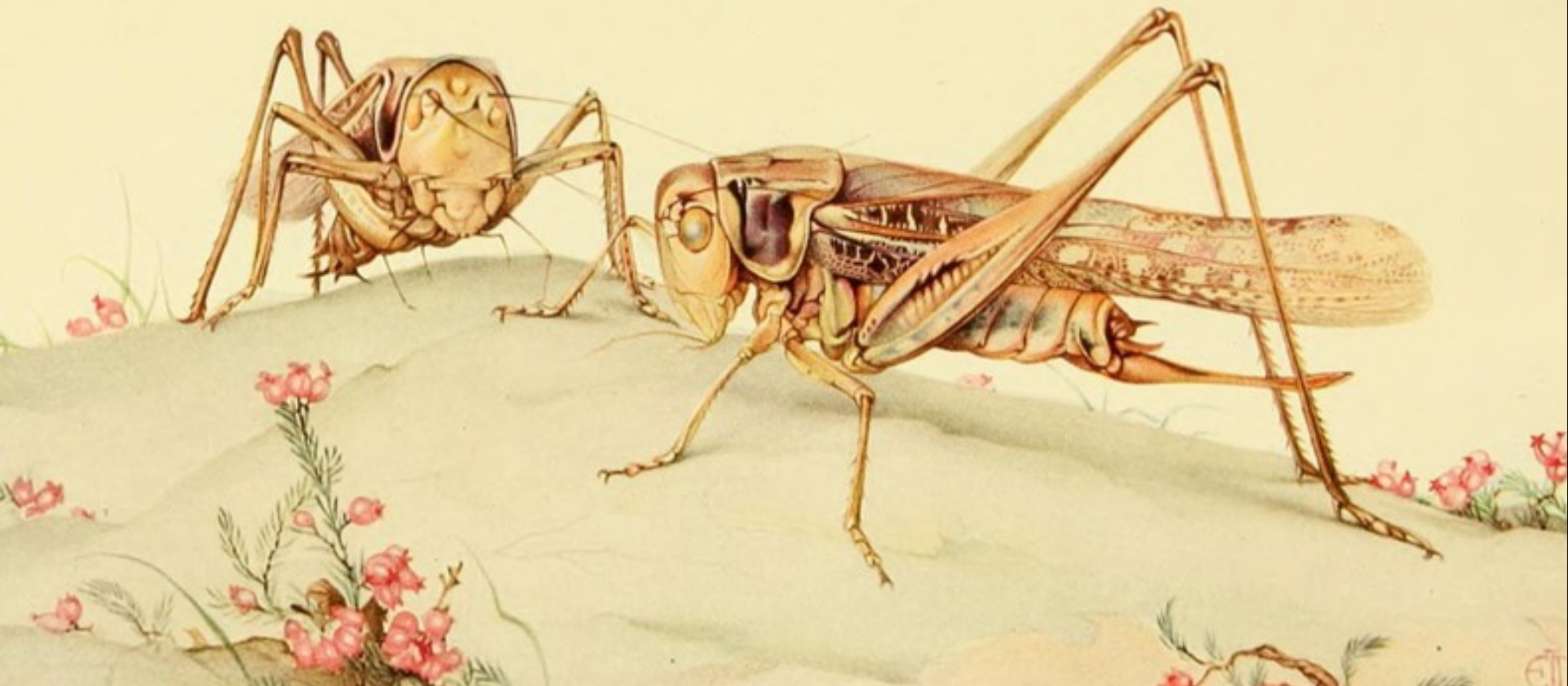


Principles  
of  
Mathematics





# Meetings







Life and Literature  
Conference and JRS  
Africa meetings  
Chicago, Illinois  
November 2011

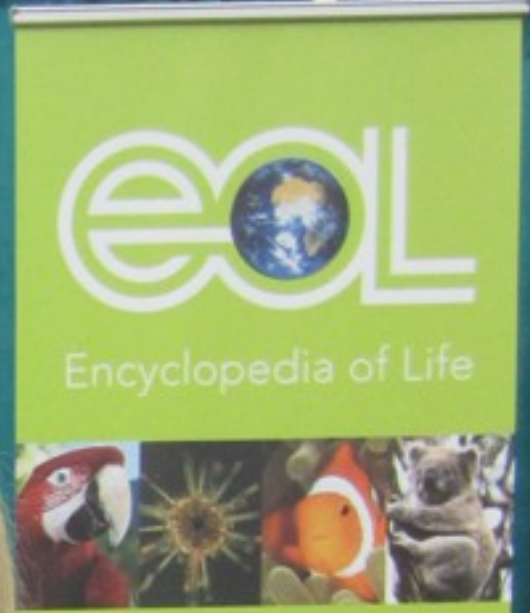


2<sup>nd</sup> Global BHL Meeting  
Chicago, IL  
November 2011





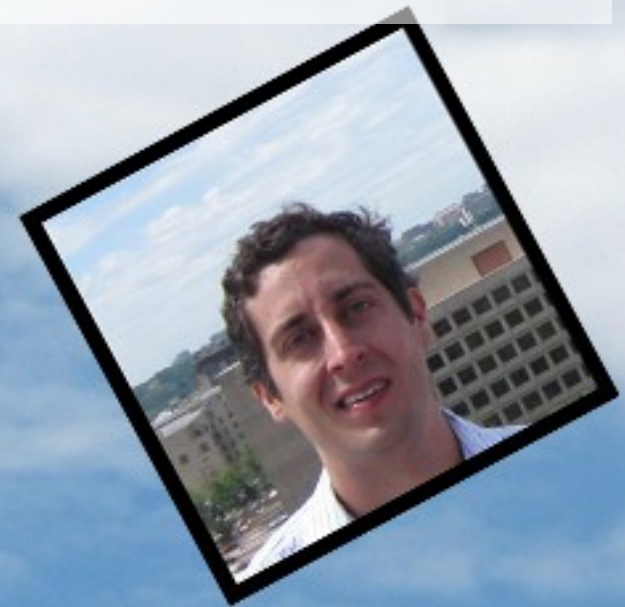
**BHL & EOL Booth  
American Library Association Meeting  
Dallas, TX, January 2012**





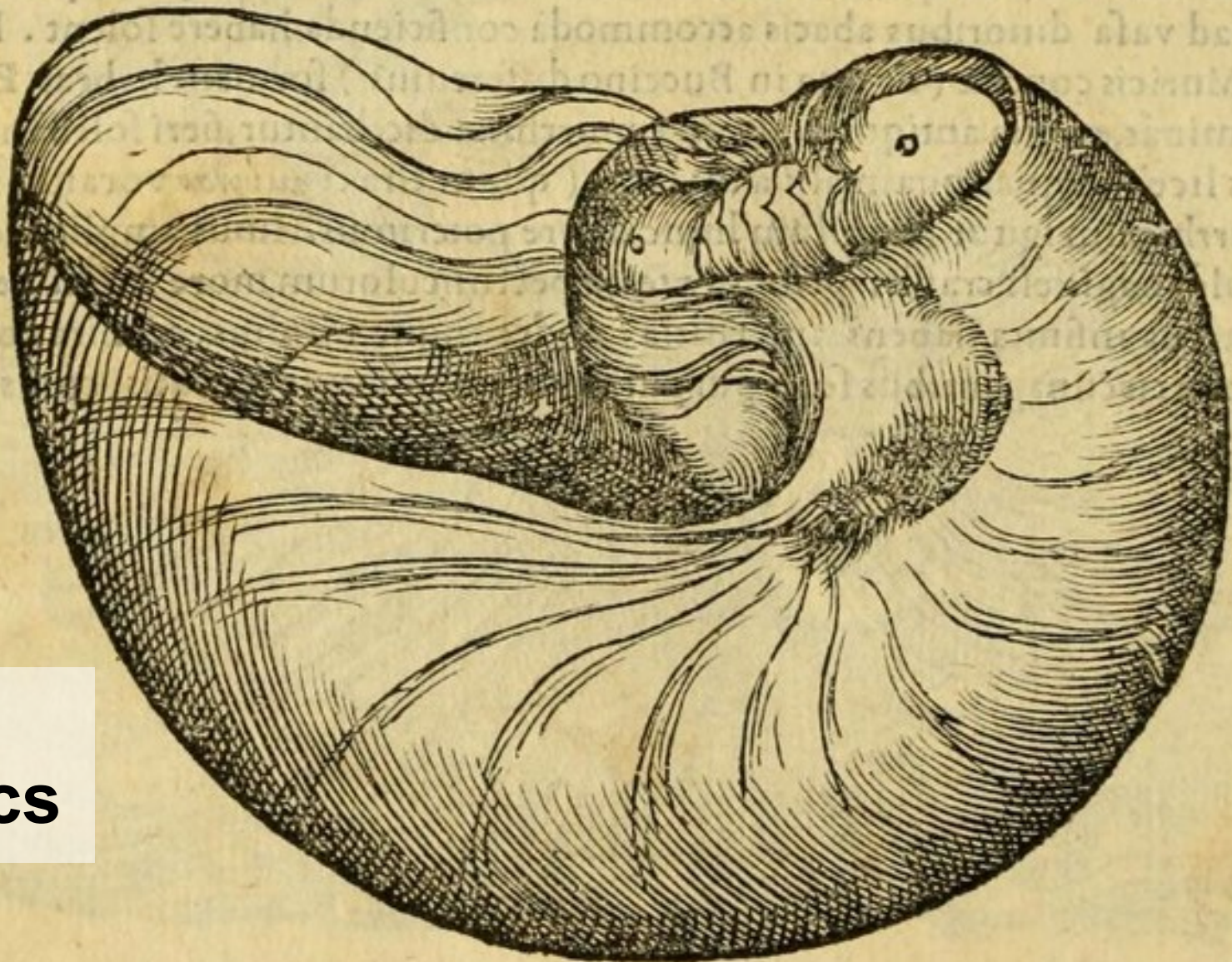


BHL SciELO meets with Smithsonian  
and MOBAT staff: April 2012,  
Washington, DC





Nautilus alter, vulgo Gallico *Coquille de pourcelene, ou grosse coquille de Nacre de perle.*

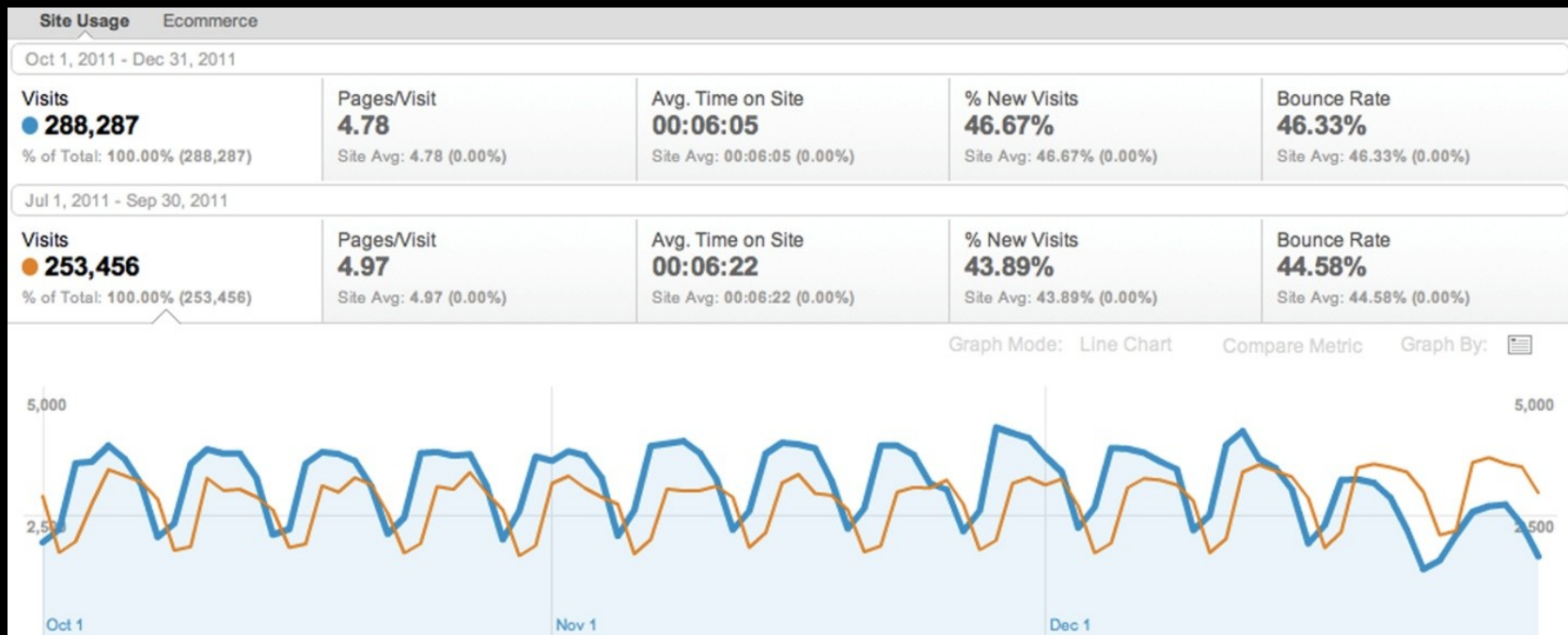


**Some  
Statistics**



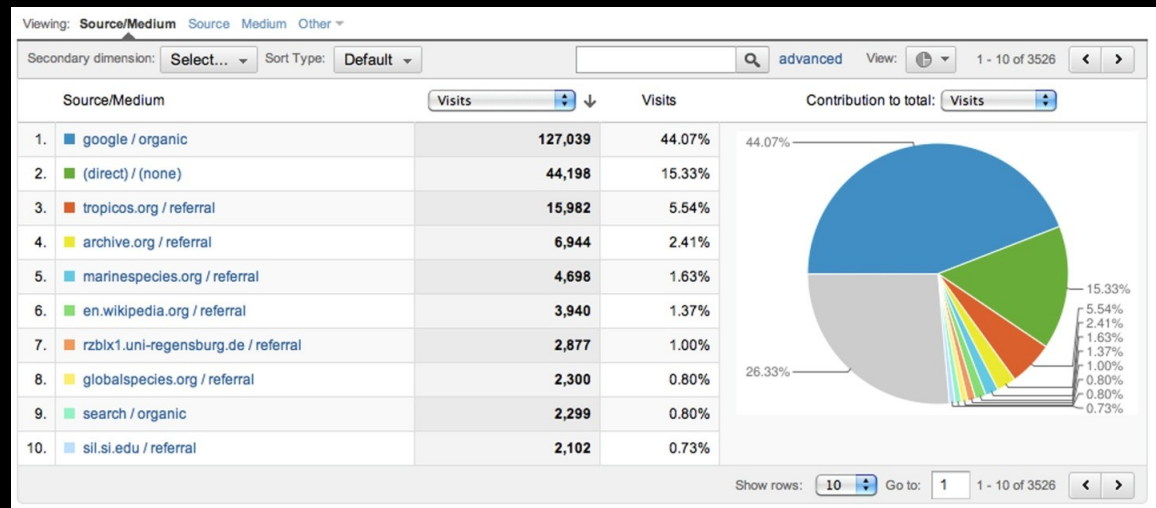


**38,887,920 pages**  
**105,762 items**  
**55,701 titles**



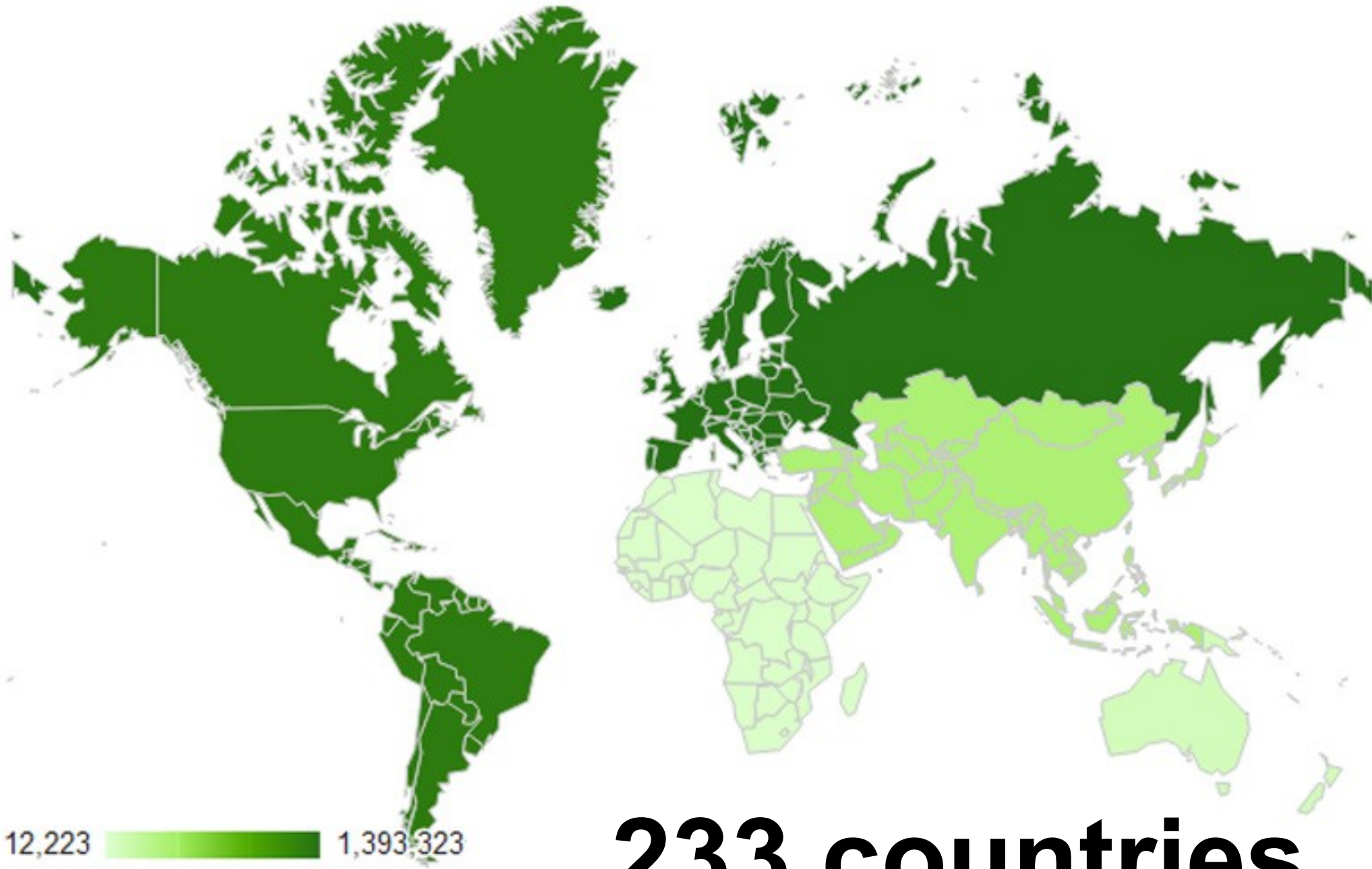
# Usage Stats Q1, FY12 (October-December 2011)

288.287 visits  
 1.376 million page views  
 46.33% Bounce rate  
 46.72% new users





**~1.6 m users | 16 m page views**



**233 countries**

Pages/Visit	Avg. Visit Duration	% New Visits
4.87	00:05:54	50.33%



# Technical Developments







# BioDivLibrary's photostream pro

Collections Sets Galleries Tags People Archives Favorites Profile BioDivLib... is a contact (edit)



n839\_w1150

an hui jing ji zhi wu zhi 安徽经济植物志 an hui ke xue ji shu chu ban she 安徽科学技术出版社 biodiversitylibrary.org/item/112354

Some rights reserved

Uploaded on Nov 9, 2011

0 comments

In January, 2012, a new application was added to the BHL administration dashboard that allows direct upload of images from BHL to Flickr, with embedded metadata and page links included.

Uploaded on Nov 9, 2011

0 comments





Macaw (Metadata Collection and Workflow). Scanning workflow and ingest management tool. Based on “Paginator” (MOBOT), Macaw allows for creating robust page level metadata and pushing content to other repositories (e.g. Internet Archive and local storage) .



Donate



Like

Tweet

Browse By: [Titles](#) | [Authors](#) | [Subjects](#) | [Map](#) | [Year](#) | [Collections](#)

Published In:

For

**Now Online**  
55,701 titles  
105,761 volumes  
38,887,720 pages  
[Recent additions](#) 

**Featured Collection**




  
Biodiversity Heritage Library  
**Carl Linnaeus Collection**

**BHL on Twitter**

BioDivLibrary GRIB original task: Create union catalog of natural history institutions w/ de-duplication & content mgmt functions [ow.ly/bmJxi](http://ow.ly/bmJxi)  
1 hour ago · favorite

BioDivLibrary Boris Jacob on

**BHL Blog** 

[My Life as a BHL Staffer: Michelle Abeln](#)

[Announcing BHL on Pinterest](#)

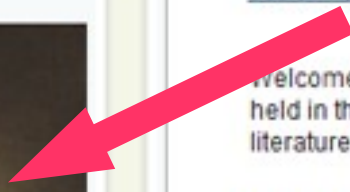
General Books/Journals Authors Subjects Scientific Names Citation Finder (BETA)

[Search Tips](#)

Welcome to the Biodiversity Heritage Library, a consortium of natural history and botanical libraries that cooperate to digitize and make available in their collections and to make that literature available for open access and responsible use as a part of a global "biodiversity collection" component of the Encyclopedia of Life (EOL).

**Today's Picks** [View additional images on BHL's Flickr stream](#)





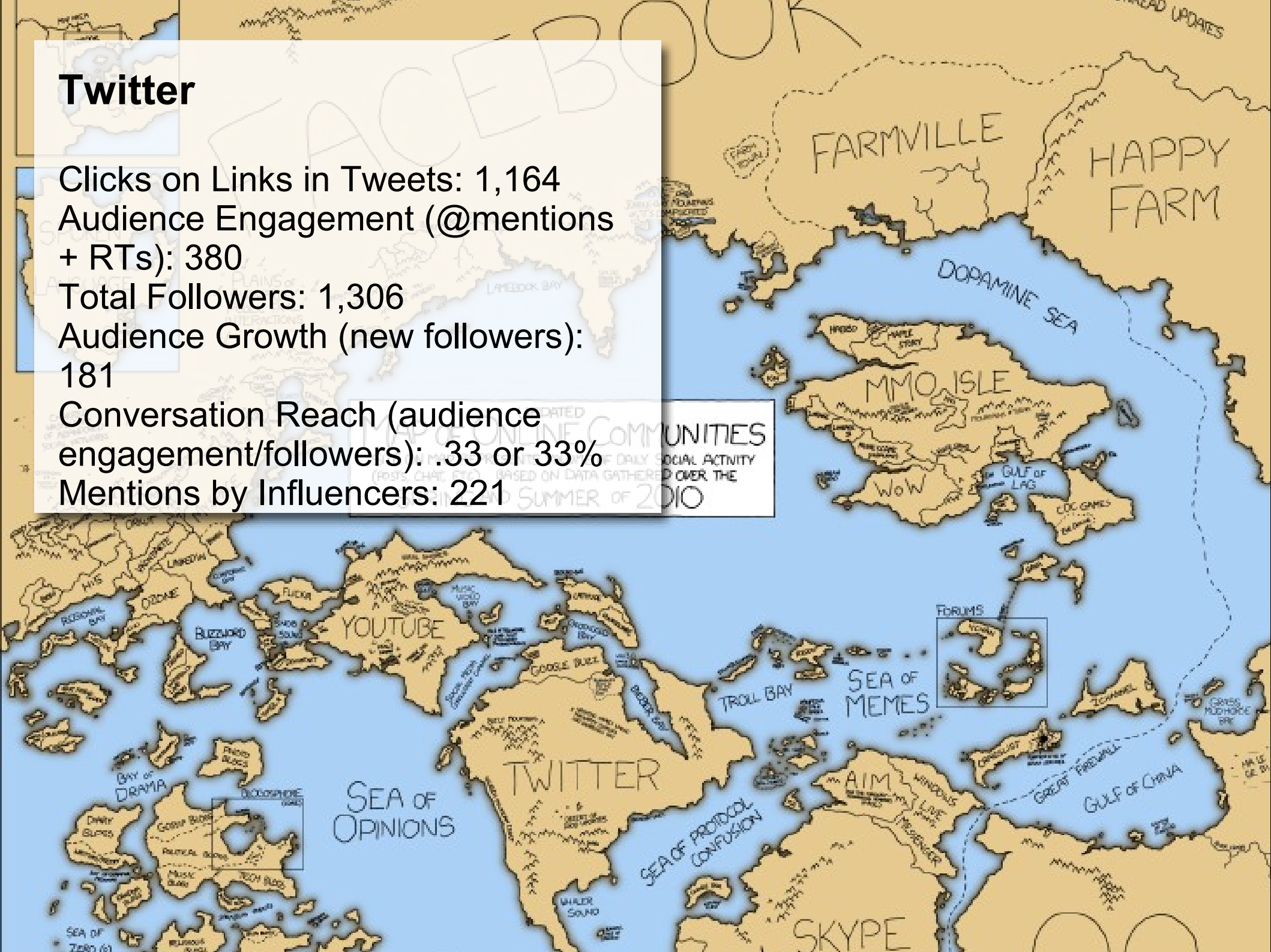






# Twitter

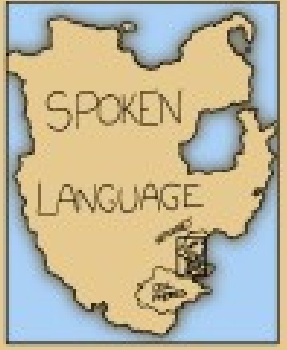
Clicks on Links in Tweets: 1,164  
Audience Engagement (@mentions + RTs): 380  
Total Followers: 1,306  
Audience Growth (new followers): 181  
Conversation Reach (audience engagement/followers): .33 or 33%  
Mentions by Influencers: 221







# FACEBOOK



CHARGED W/STAYAWAY OF NEIGHBORHOOD SOCIAL NETWORKS

PLAINS of PROBABLY PUBLIC FAMILY INTERACTIONS

UPDATED  
**MAP OF ONLINE COMMUNITIES**  
SIZE ON MAP REPRESENTS VOLUME OF DAILY SOCIAL ACTIVITY (POSTS, CHAT, ETC.) BASED ON DATA GATHERED OVER THE SPRING AND SUMMER OF 2010

FARMVILLE

HAPPY FARM

DOPAMINE SEA

MMO ISLE

WoW

LOL GAMES

YOUTUBE

TWITTER

**Blog**

Total Visits: 4,868  
Unique Visitors: 3,540

SEA OF OPINIONS

SEA OF PROTOCOL CONFUSION

SKYPE

SEA OF ZERO (0)

MYSPACE

BLIZZARD BAY

GOOGLE BUCK

TROLL BAY

FORUMS

BAY OF DRAMA

GOSSIP BAY

POLITICAL BAY

TECH BAY

WHLDR SOUND

SEA OF

AIM

SEA OF

CHINA

SEA OF

CHINA

SEA OF

CHINA

SEA OF

CHINA

May I compliment you on this splendid service? The Library's invaluable for my work on seasonal variability of climate and vector-borne disease in British India, 1875-1940.

I really appreciate your work. The Biodiversity Heritage Library is an excellent resource that regularly helps my assistant and I obtain original descriptions for plants .... I feel so privileged to be working in a day in age when such resources are so readily available and easy to obtain.

What an absolutely wonderful site.  
It is a treasure trove of information.  
Thank you!



Thanks | Danke!

