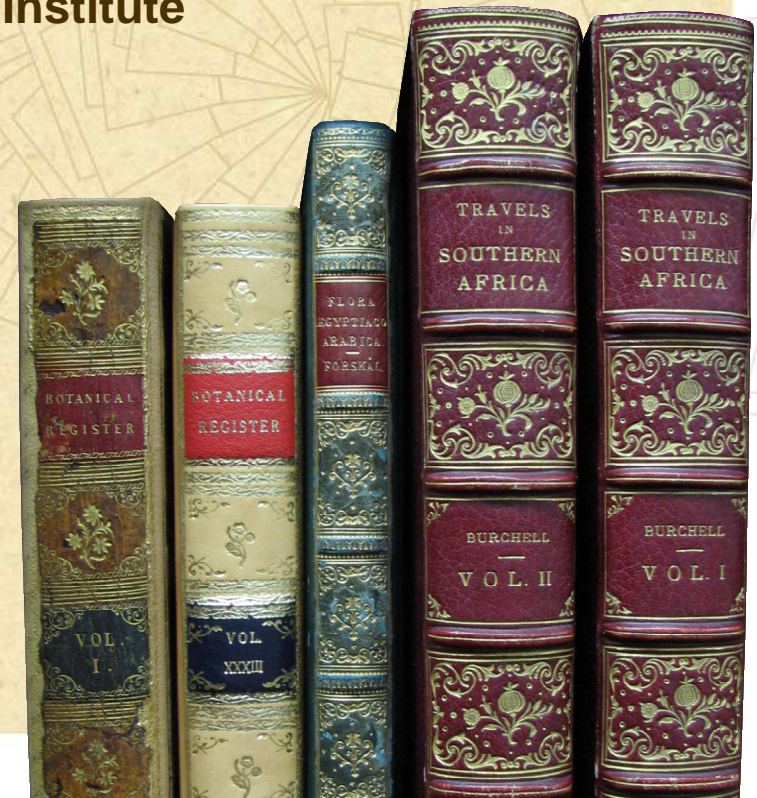


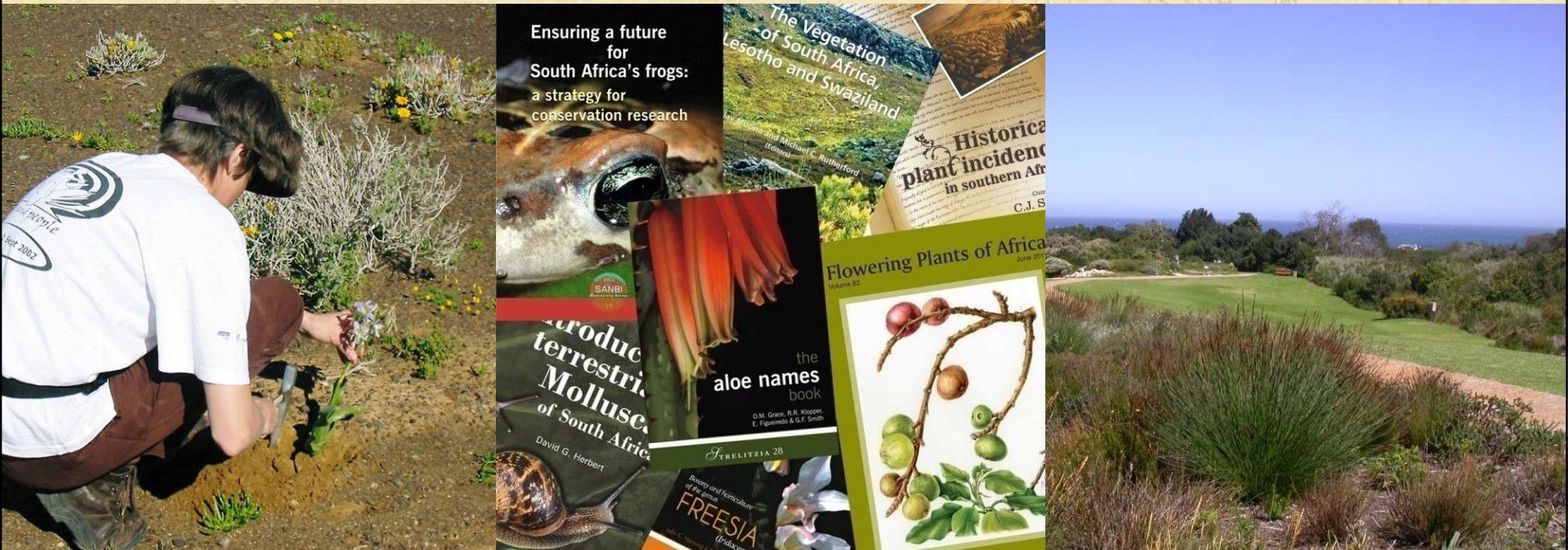


South African National Biodiversity Institute
LIBRARIES



South African National Biodiversity Institute

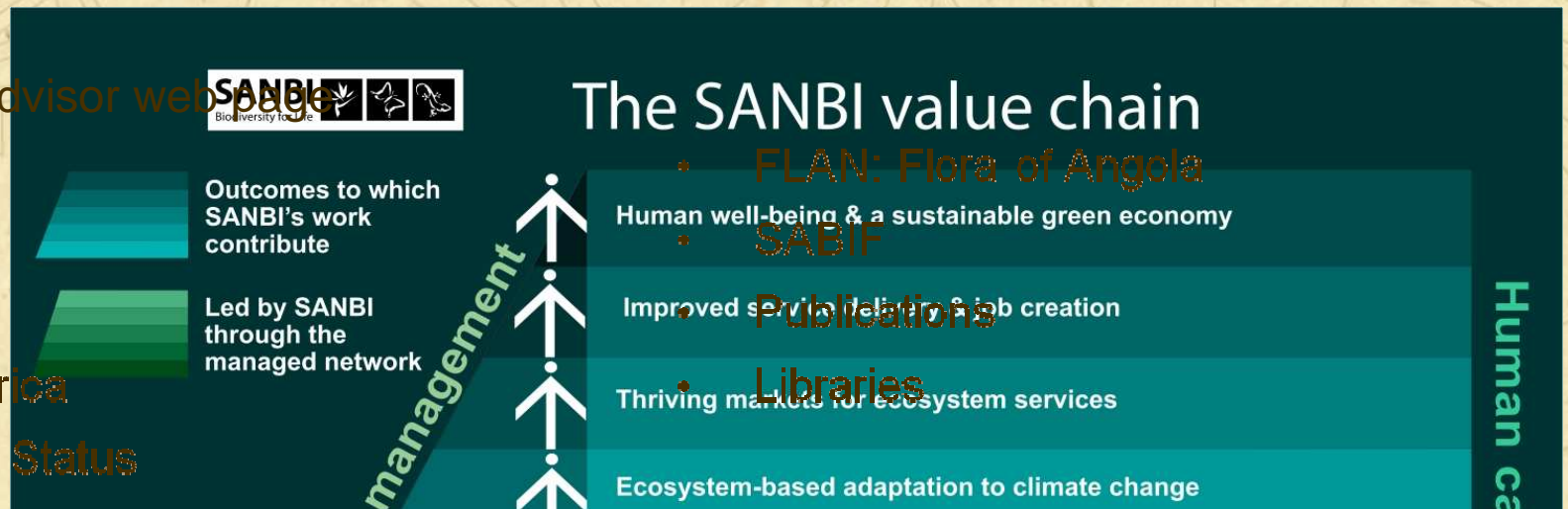
1. National Environmental Management: Biodiversity Act, 2004 (No. 10 of 2004).
2. Effective protection and management of its biodiversity
3. SANBI's core business:
 - Biodiversity Research Portfolio Management
 - Biodiversity Knowledge, Policy and Network Managements
 - Conservation Estate Management and Corporate Services



Biodiversity Information Management

1. The main purpose
2. Clients
3. Biodiversity Advisor web page

- SIBIS
- POSA
- BGIS
- Plantzafrica
- Species Status



SIBIS:SABIF Integrating Biodiversity Information

Home

Data Sources

Statistics

Questions

Contact Details

Search Options

Species Search

Species Results

Current Species

Interactive Map

Specimen Search

Specimen Results

Current Specimen

Where Am I?

SIBIS

SANBI's biodiversity information is now available online!

SIBIS offers:

- Threatened species information
- Distribution maps
- Area checklists
- General species details

View SIBIS statistics

SIBIS is the gateway to SANBI's biodiversity information, and information shared by SANBI partners. SIBIS provides access to over 1.6 million occurrence records and comprehensive coverage of South Africa's 22 000+ plant species. Animal species are being added as they become available.

SIBIS is a new product, so please [let us know](#) if you have any suggestions.

Newsflash! New SABIF data added!

Get started:

If you have a species in mind, use [Species Search](#) to see what information SANBI has to offer, including a distribution map.

SABIF

The South African Biodiversity Information Facility was established by the Department of Science and Technology, in an endeavor to facilitate free and open access to the biodiversity data of South Africa and in this manner contribute to the sustainable development of the country. SABIF is also the national node of the Global Biodiversity Information Facility, and shares its vision to make world's biodiversity data freely and universally available via the Internet. It can be accessed at www.sabif.ac.za.

One of SABIF's main objectives is to promote the sharing of biodiversity data. It does this through creating and maintaining strong networks and partnerships with organizations working together to mobilize biodiversity data. Currently SABIF has mobilized more than 6.5 million biodiversity data records, including data on plants, mammals, birds, invertebrates, reptiles and fish, and through the use of the SIBIS informatics platform is able to very efficiently serve this data. SABIF also provides funding to support the digitization efforts of organizations throughout South Africa and in this way is able to encourage organizations to capture the vast quantities of data that remains to be captured in natural history collections, research organizations and herbaria.

Biodiversity Advisor

Biodiversity richness for all South Africans

Helping you find the right biodiversity information from SANBI's websites

BIODIVERSITY ADVISOR

Home

About

Environmental assessment (e.g. EIAs)

Land-use planning

Systematic biodiversity planning

Species distribution modelling

Research & taxonomy

Access to information

Contact

Welcome to SANBI's Biodiversity Advisor

The Biodiversity Advisor revolutionizes access to information on South Africa's biodiversity.

The Biodiversity Advisor helps you use SANBI's online biodiversity information resources for decision-making, planning and research [more...](#)

On this site...

Land-use Planning

Quick links

SANBI's online information resources

- [Biodiversity GIS \(BGIS\)](#)
- [Plants of southern Africa \(POSA\)](#)
- [South African Biodiversity Information Facility \(SABIF\)](#)
- [SANBI's Integrated Biodiversity Information System \(SIBIS\)](#)
- [DEA Environmental Indicators Website](#)

[More information](#) about these websites

[Find out more about each section of this website](#)

GBIF emerging scientist award

Dylan Clarke, curator of fishes at Iziko Museums, has been awarded a SABIF grant to attend the GBIF Science Symposium in Argentina in October.

This year the Global Biodiversity Information Facility celebrates 10 years of its existence. The Science Symposium will showcase success stories of country nodes.

SANBI libraries

My role in the use or dissemination of biodiversity literature in southern Africa

1. My responsibilities
2. My job purpose
3. My core business
4. Two main projects of SANBI Libraries
 - KOHA
 - Digitization
5. Our challenges



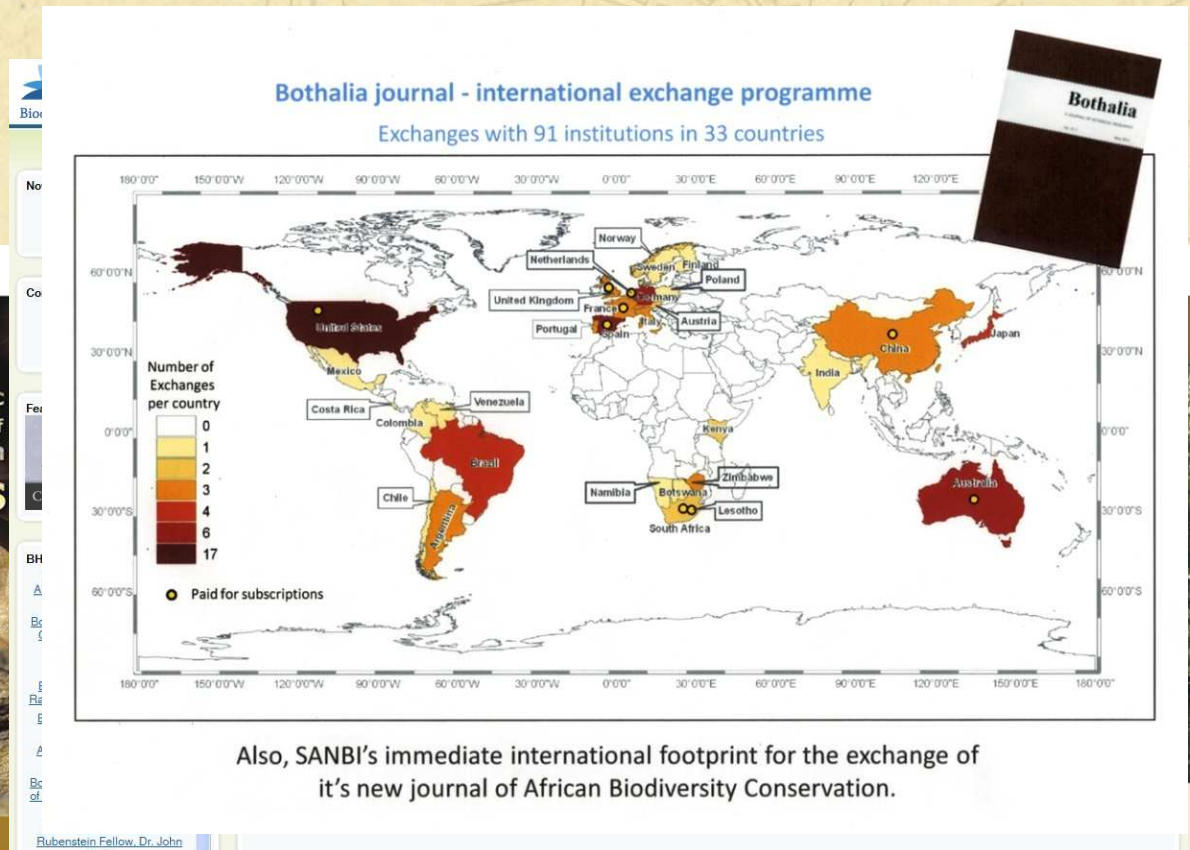
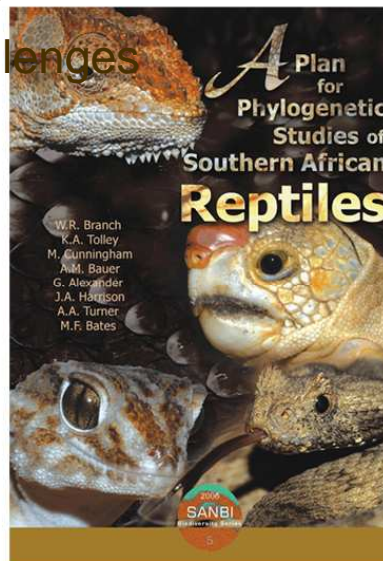
UNIVERSITEIT VAN PRETORIA
UNIVERSITY OF PRETORIA
YUNIBESITHI YA PRETORIA

SANBI libraries

The impact my participation might have on the digitization of literature in Africa in the conference and workshop

Free, immediate, online access to the results of scholarly research, and the right to use and re-use those results as you need – has the power to transform the way research and scientific inquiry are conducted. <http://oa.mpg.de/berlin-prozess/berliner-erklarung/>

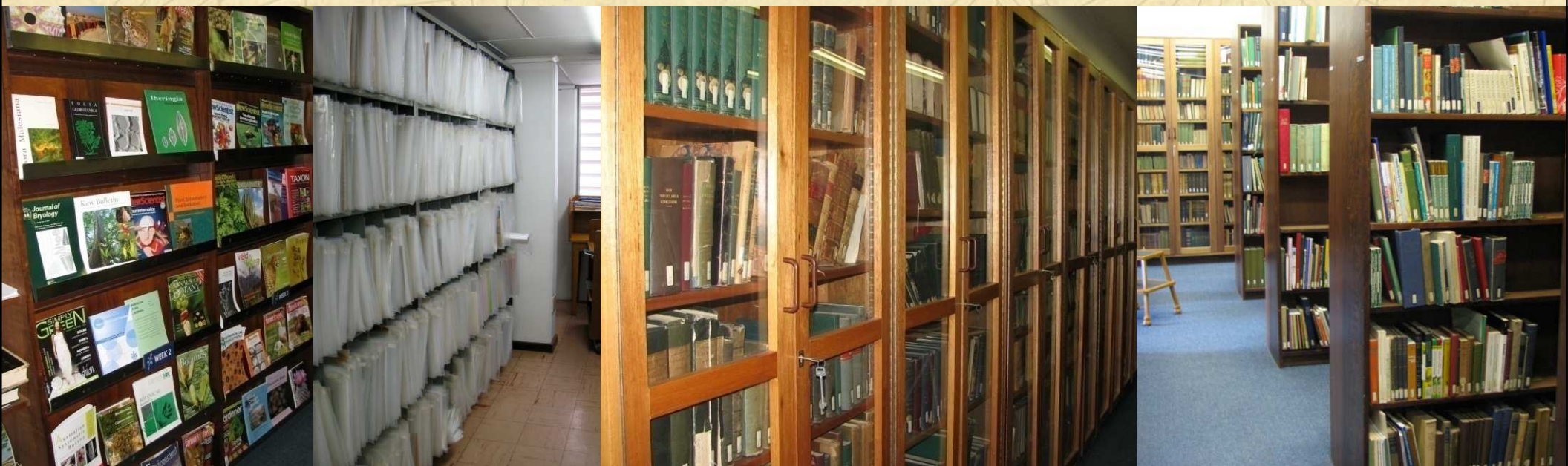
1. Need to access old literature documenting or describing the biodiversity
2. Local digitizing projects
3. Biodiversity Heritage Library
4. Trans-institutional or trans-national cooperation
5. Leading role
6. Biggest challenges



SANBI libraries

What is required to improve the content and delivery of biodiversity literature in Africa?

1. Comprehensive program
2. Housing and environment
3. Repository
4. Establish and maintain links
5. Information requires a capacity of analysis, management, presentation, distribution, and integration



Conclusion

1. Worldwide loss of biodiversity
2. Africa's ecosystems
3. Wealth of biodiversity
4. South Africa
5. Spread of biodiversity knowledge

If you have a garden and a library, you have everything you need

–Cicero

