

# The Biodiversity Heritage Library One Year Update: 2010 - 2011



# BHL



**2<sup>nd</sup> Global BHL Meeting**  
**13 November 2011 | The Field Museum**  
**Martin R. Kalfatovic | Smithsonian Libraries**

New Logo!



BHL

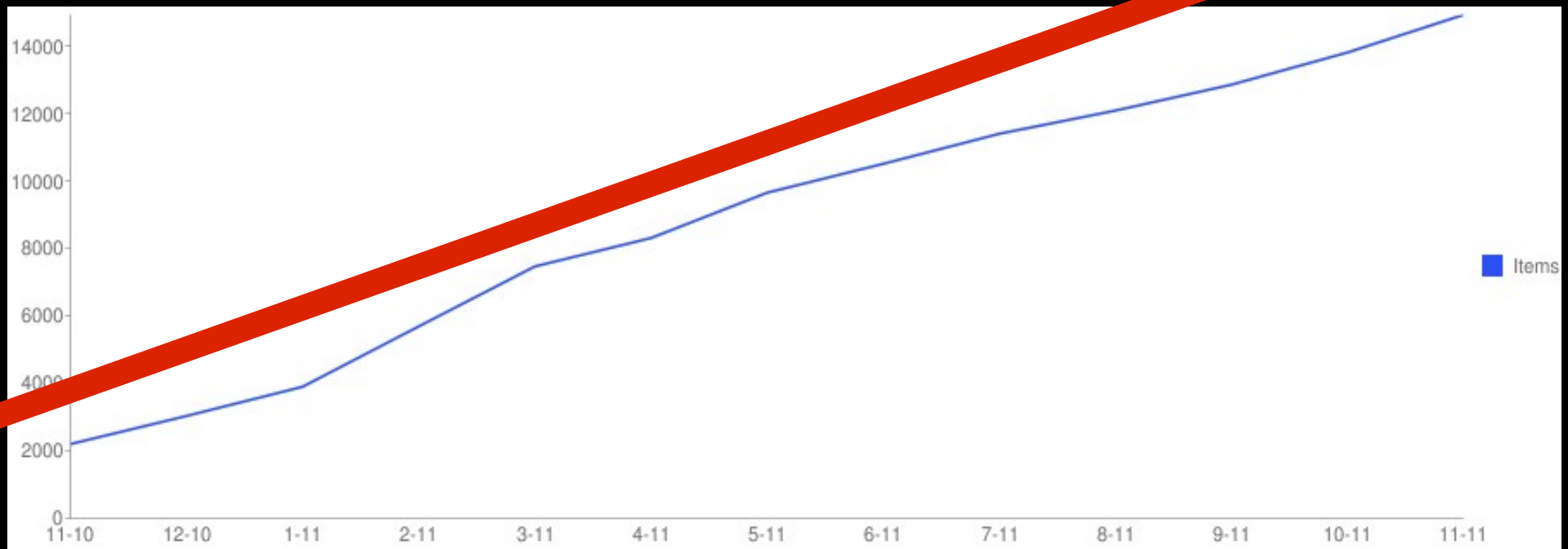
Biodiversity Heritage Library

# Current Content (as of 12 Nov 2011)

> 48,851 titles

> 96,031 volumes

> 35,871,629 pages



# Usage Stats

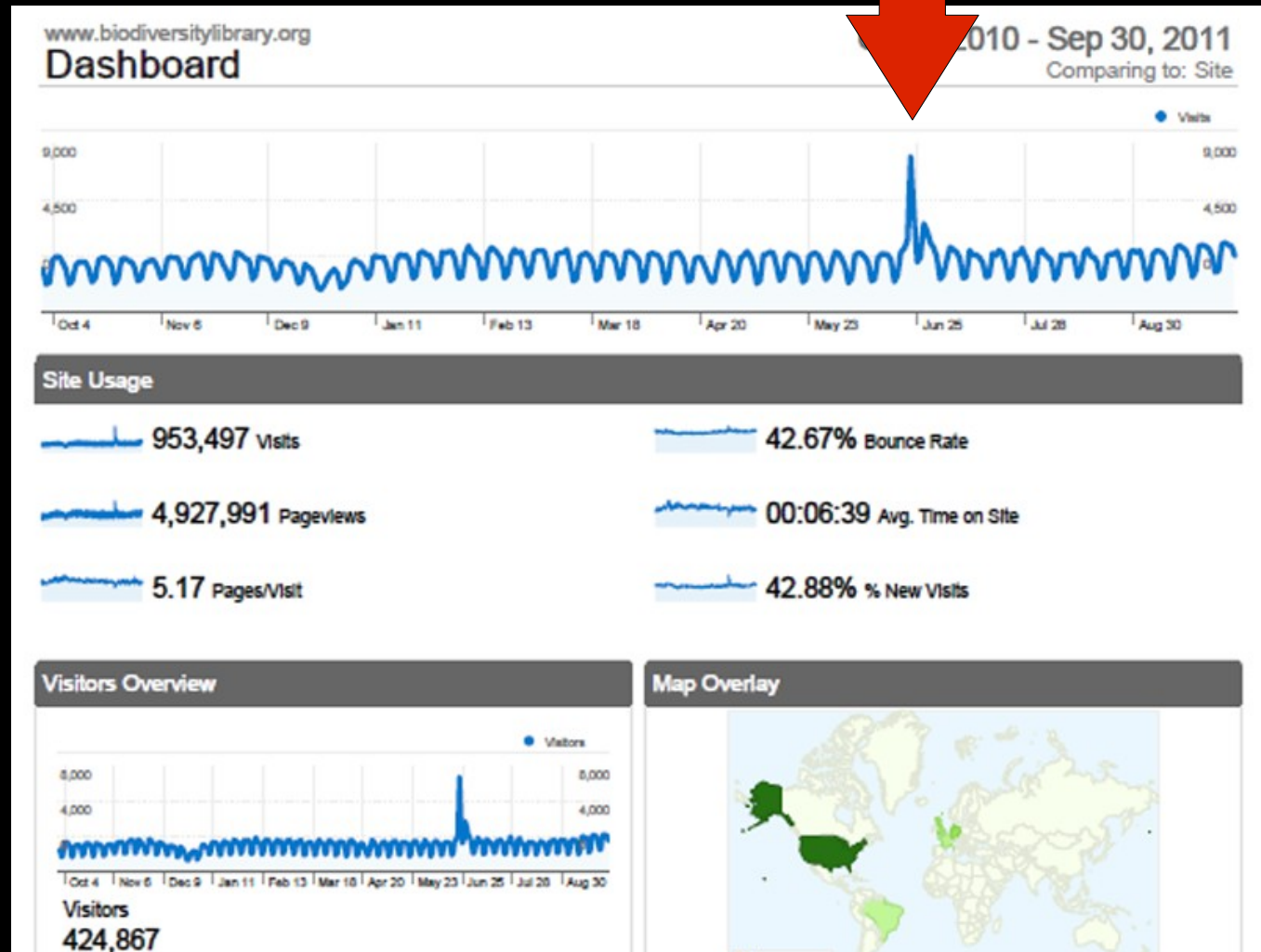
953,497 views

4.9 million page views

42.67% Bounce rate

42.86% new users

Hmmmm



# New BHL Governance

## Executive Committee

- Chair, Vice-Chair, Secretary
- Project Director, Deputy Project Director
- Technical Director

## Steering Committee

- Contribute funds to the Secretariat
- 8 institutional members (Smithsonian, MOBOT, NMH, Kew, NYBG, Cal Academy, MBL/WHOI, Harvard/MCZ,

## Institutional Council

- Interested institutions who sign participation agreement

## 13. Cornell University Library

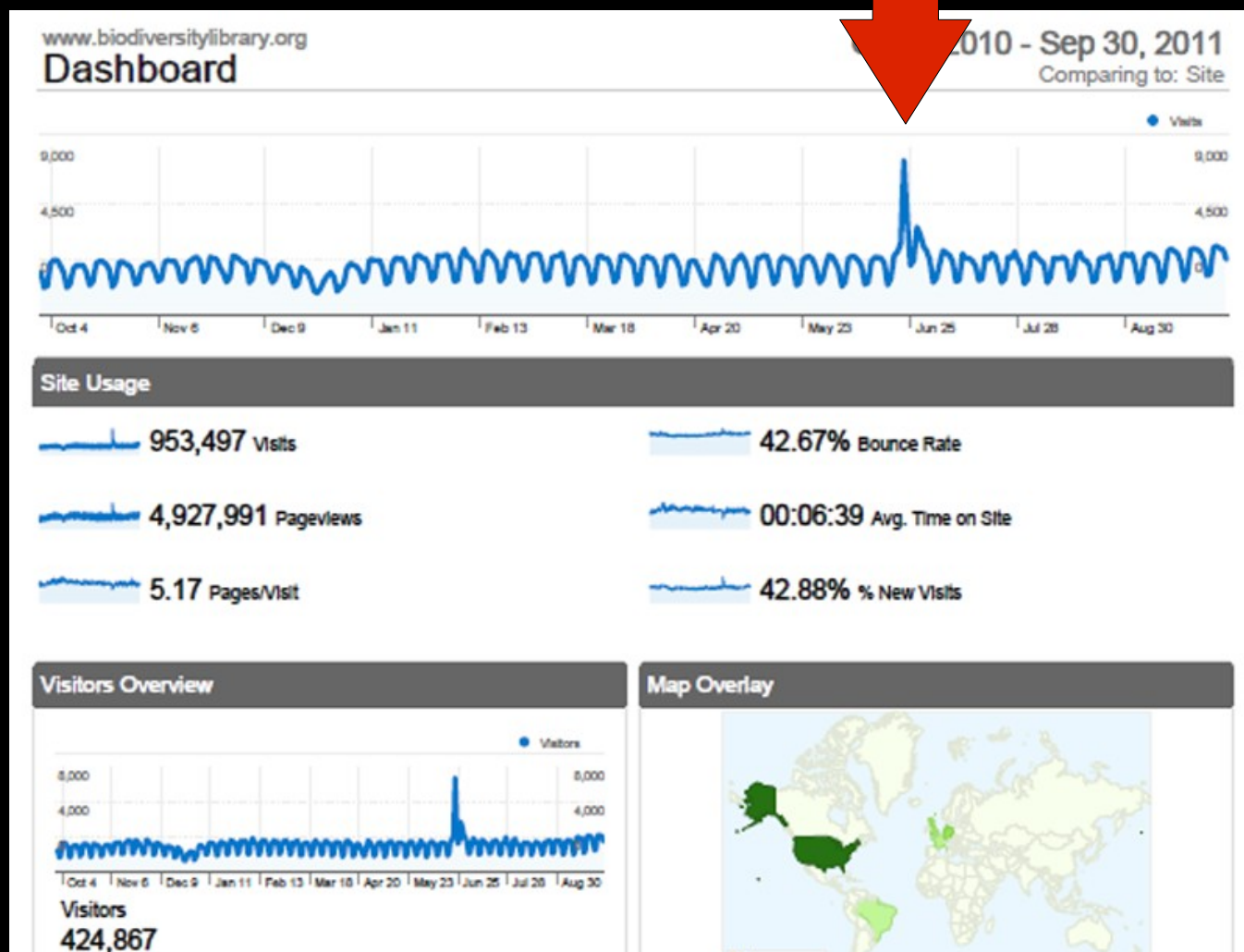


**New &  
Improved**

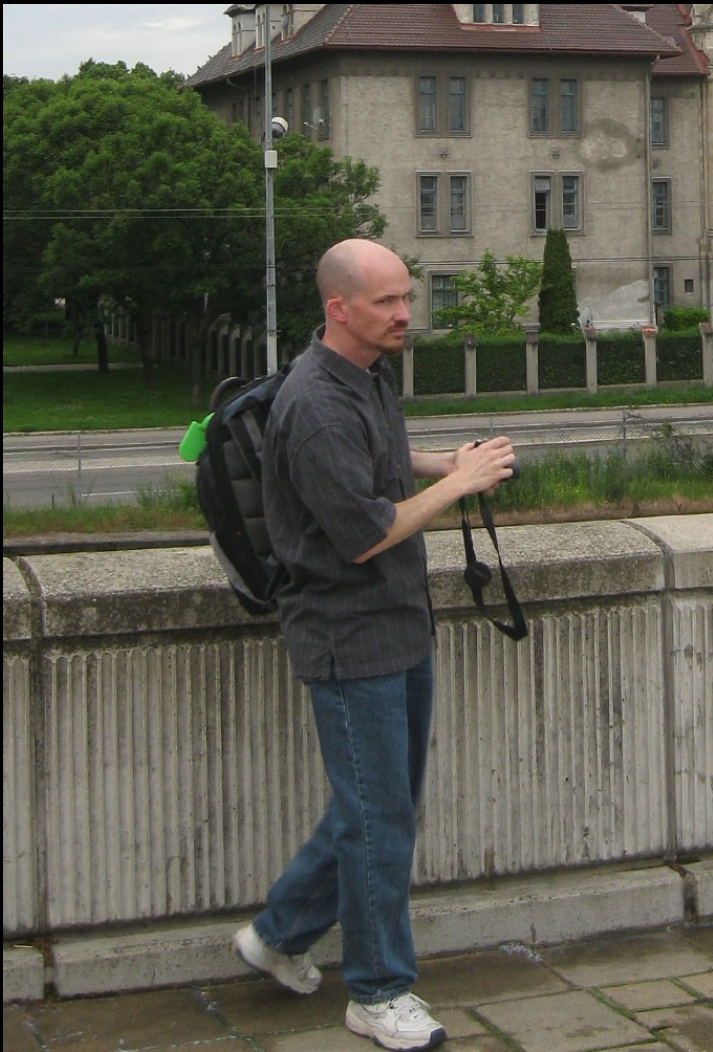
14. United States  
Geological Survey  
Library

# Remember this slide?

Hmmmm



# Darwin's Library Launch May 2011





## Some Meetings:

- IBC 7/2011
- BHL China 11/2010
- BHL Europe: Den Hague 8/2011, Tervuren 5/2011, London 11/2010
- Global Names Meeting 8/2011
- BioSystematics Berlin 8/2011
- TDWG 10/2011
- Sherborne Symposium 10/2011





De Gruyter Saur and IFLA are delighted to announce that the winners of the De Gruyter Saur IFLA Research Paper Award 2011 are **Erin Thomas, Grace Costantino, Bianca Crowley** and **Rebecca Morin** with their paper entitled "*Heeding the Call: User Feedback Management and the Digital Library*"



"Retooling Special Collections Digitisation in the Age of Mass Scanning," Constance Rinaldo, Judith Warnement, Tom Baione, Susan Fraser, and Martin R. Kalfatovic. *Ariadne*. Issue 67, July 2011

[BHL site](#)

[BHL blog](#)

[Follow BHL on Twitter](#)

Connect with BHL



## Help Support BHL

Thank you for your interest in supporting the Biodiversity Heritage Library (BHL) program through a donation to the Smithsonian Institution Libraries. The Libraries hosts the BHL Secretariat and program staff. The Smithsonian Institution is a tax-exempt organization and gifts are tax deductible.

The BHL is a consortium of natural history and botanical libraries in the U.S. and U.K. that cooperate to digitize and make accessible the published literature of biodiversity. Over 90,000 volumes are available for open access and responsible use as a part of a global "biodiversity commons." There is much left to do.


Scientists all over the world use the library to identify and classify new species. The student in her backyard, the forestry manager and ecologist, the museum habitat builder, the artist and the designer - whether the need is for a scientific description of a spider or a beautifully illustrated drawing of an amaryllis, all can benefit from being able to search the biodiversity literature.

Click on the button below to add your donation to your shopping cart. If you wish to donate a different amount, enter it in the "other" field, or you may change the amount in your basket.

**Donation Amount:** \*  
(US Dollars)

- \$20.00
- \$50.00
- \$100.00
- \$250.00
- \$500.00
- \$1000.00
- Other

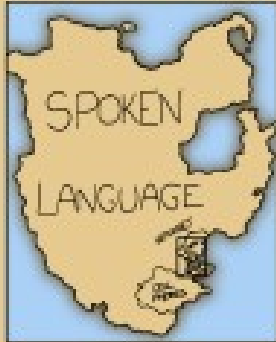
Your generous support will fund direct scanning costs for additional texts in the BHL, data curation, and technical development. We cannot direct donations to specific items at this time. Work may take place at any of the cooperating institutions. Comments about the Biodiversity Heritage Library can be made via the [BHL feedback link](#)



Increased emphasis on outreach

- > new print brochure
- > We have buttons!
- > Life and Literature schwag

# FACEBOOK



PLAINS of  
PUNWARDLY  
PUBLIC FAMILY  
INTERACTIONS

UPDATED  
MAP OF ONLINE COMMUNITY  
SIZE ON MAP REPRESENTS VOLUME OF DAILY SOCIAL ACTIVITY  
(POSTS, CHAT, ETC.) BASED ON DATA GATHERED OVER THE  
SPRING AND SUMMER OF 2011

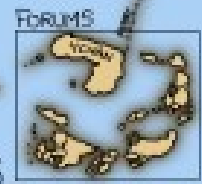
“Endless thanks to @BioDivLibrary ... your archives are helping me a lot with my book and master thesis!!!”



SEA OF OPINIONS

YOUTUBE

SEA OF MEMES



SKYPE

CHARGED WATERSHED OF NEIGHBORHOOD SOCIAL NETWORKS

MYSPACE

BLIZZARD BAY

GOOGLE BUCK

TROLL BAY

AIM

GREEN FERRARI

GULF OF CHINA

BAY OF DRAMA

SEA OF ZERO (0)



WHALES SOUND

SEA OF PROTOCOL CONFUSION

WINDOWS

MY LIVE

PROSELYTIC

GREEN MUDHOSE BAY

ARISE OZ

ARISE OZ

ARISE OZ

ARISE OZ

ARISE OZ



# BioDivLibrary's photostream pro

Collections Sets Galleries Tags People Archives Favorites Profile BioDivLib... is a contact (edit)



**n839\_w1150**

an hui jing ji zhi wu zhi 安徽经济植物志 an hui ke xue ji shu chu ban she 安徽科学技术出版社 biodiversitylibrary .org/item/112354

Some rights reserved

Uploaded on Nov 9, 2011

0 comments



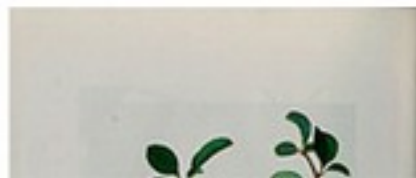
**n838\_w1150**

an hui jing ji zhi wu zhi 安徽经济植物志 an hui ke xue ji shu chu ban she 安徽科学技术出版社 biodiversitylibrary .org/item/112354

Some rights reserved

Uploaded on Nov 9, 2011

0 comments



“I’d like to take the opportunity to let you know how much the Biodiversity Heritage Library initiative is highly appreciated among people like me who try to learn from those who delivered valuable information in the past. Your website is a real treasure! Congratulations.”

“I wanted to comment on what a great resource this library is. I was so happy to discover an archived issue of a journal that I wouldn’t otherwise have been able to access easily. Your service made it simple and stress-free. Thank you.”



Enter Red List search term(s)

GO

OTHER SEARCH OPTIONS

[Home](#) »

## Diceros bicornis ssp. longipes

NOT EVALUATED	DATA DEFICIENT	LEAST CONCERN	NEAR THREATENED	VULNERABLE	ENDANGERED	CRITICALLY ENDANGERED	EXTINCT IN THE WILD	EXTINCT
NE	DD	LC	NT	VU	EN	CR	EW	EX



[Summary](#)

[Classification Schemes](#)

[Images & External Links](#)

[Bibliography](#)

[Full Account](#)

### Taxonomy [\[top\]](#)

Kingdom	Phylum	Class	Order	Family
ANIMALIA	CHORDATA	MAMMALIA	PERISSODACTYLA	RHINOCEROTIDAE

Scientific Name:	<i>Diceros bicornis ssp. longipes</i>
Infra-specific Authority:	Zukowsky, 1949
Common Name/s:	English – Western Black Rhino, Western Black Rhinoceros

[Taxonomy](#)  
[Assessment Information](#)  
[Geographic Range](#)  
[Habitat and Ecology](#)

 [View Printer Friendly](#)

### Assessment Information [\[top\]](#)

Red List Category & Criteria:	Extinct <a href="#">ver 3.1</a>
Year Assessed:	2011
Assessor/s:	Emslie, R.
Reviewer/s:	Knight, M.H. & Adcock, K.

**Justification:**

The last extensive survey of possible rhino range in the last known range state, Cameroon in 2006, failed to

19 inches.

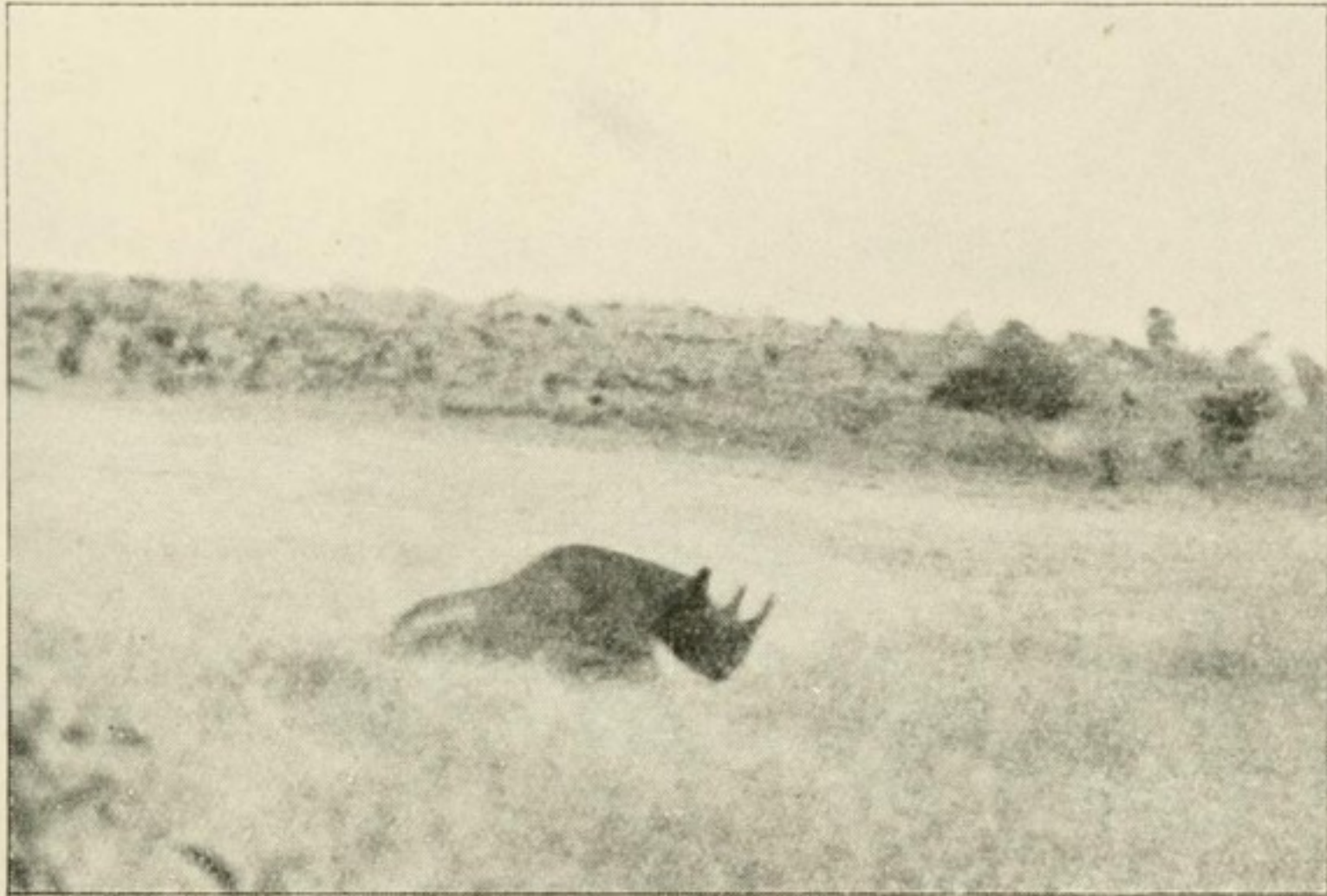
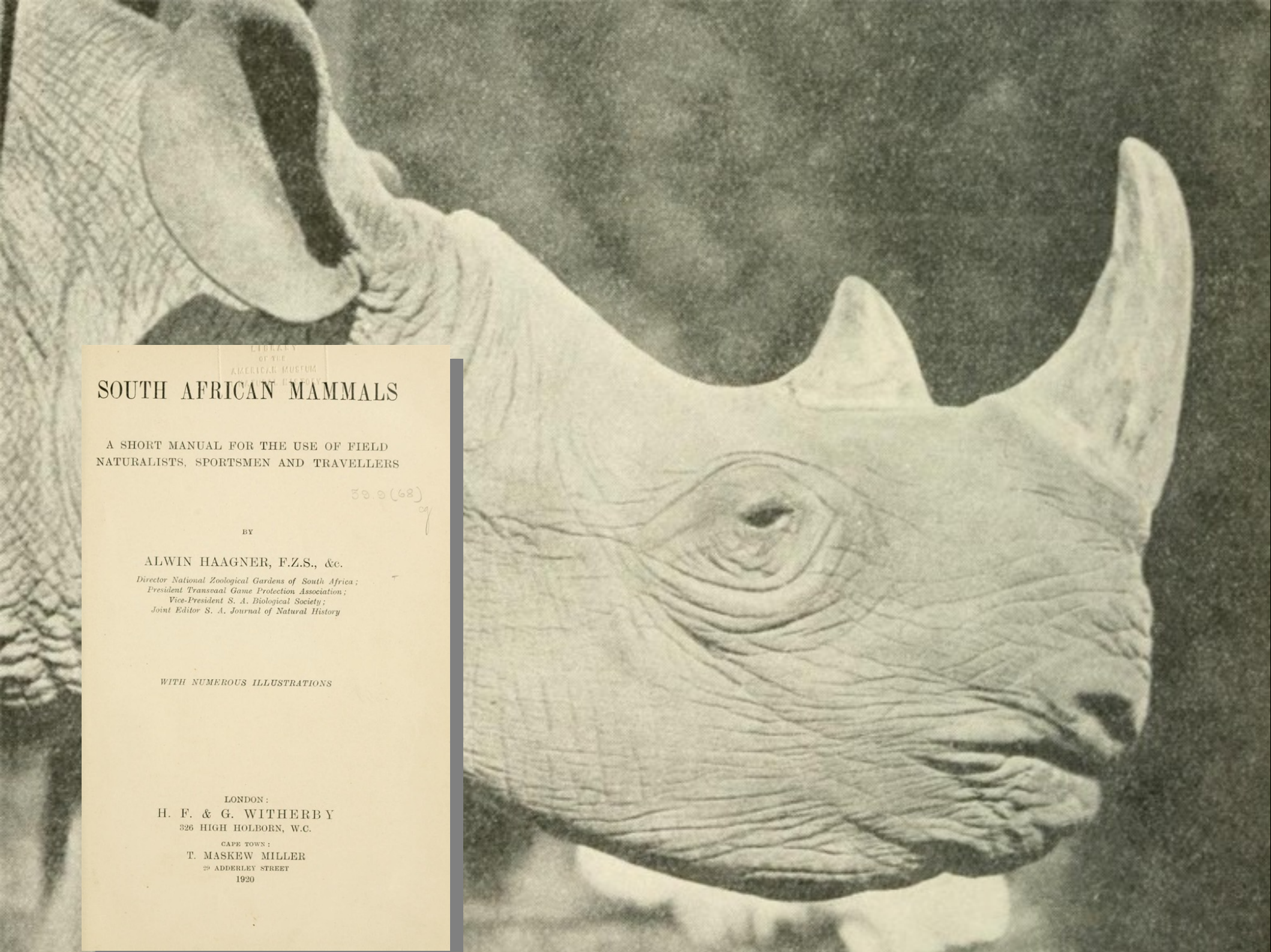


FIG. 51.—Wounded Rhino—"German" East Africa.

Unlike the White Rhino, the Black Rhino is usually found in bushy country, and is also of a solitary dis-

position. In habits it resembles the former, occupying



LIBRARY  
OF THE  
AMERICAN MUSEUM  
OF NATURAL HISTORY

# SOUTH AFRICAN MAMMALS

A SHORT MANUAL FOR THE USE OF FIELD  
NATURALISTS, SPORTSMEN AND TRAVELLERS

59.0 (68)  
cy

BY

ALWIN HAAGNER, F.Z.S., &c.

*Director National Zoological Gardens of South Africa;  
President Transvaal Game Protection Association;  
Vice-President S. A. Biological Society;  
Joint Editor S. A. Journal of Natural History*

WITH NUMEROUS ILLUSTRATIONS

LONDON:

H. F. & G. WITHERBY  
326 HIGH HOLBORN, W.C.

CAPE TOWN:

T. MASKEW MILLER  
29 ADDERLEY STREET

1920

Thanks!

